



# Belemnites and calcareous nannoplankton: Proxy tools for recognising of cryptic Jurassic geological history of Central Europe

Jan Geist<sup>1</sup> · Katarína Holcová<sup>1</sup> · Lucie Vaňková<sup>1,2</sup> · Martin Mazuch<sup>1</sup> · Martin Košťák<sup>1</sup>

Received: 14 December 2021 / Revised: 5 April 2022 / Accepted: 19 May 2022 / Published online: 5 July 2022  
© The Author(s), under exclusive licence to Senckenberg Gesellschaft für Naturforschung 2022

## Abstract

Belemnites and calcareous nannoplankton (which are both stratigraphically and palaeoecologically important groups of organisms) have been used as crucial evidence for exploring an extended timespan of Jurassic sedimentation in the northern part of the Bohemian Massif. Tectonically and fragmentarily preserved Jurassic strata along the Lausitian Fault have long been considered exclusively as belonging to the Callovian through the Kimmeridgian. Based on a systematic revision of older collections, new sediment sampling and analysing data, the stratigraphic range of Jurassic sedimentation in the northern part of the Bohemian Massif has been extended, at least from the Bajocian until the Tithonian. Belemnite taxa are represented by six species and two taxa identified as *Megateuthis* cf. *M. elliptica* and *Cylindroteuthis* cf. *C. puzosiana* (five genera belonging to four families) document a stratigraphic range from the Bajocian (*Megateuthis suevica* and *Megateuthis* cf. *M. elliptica*) through the Kimmeridgian. Additionally, calcareous nanofossils do not contradict the Bajocian–Kimmeridgian while also proving the Tithonian age. Moreover, belemnites clearly show the prevailing Tethyan (*Belemnopsis* fauna) but also Boreal (*Cylindroteuthis* cf. *C. puzosiana*) provenance. Recorded fossils reveal a longer time span of sedimentation than previously known (starting at least in the Bajocian and terminating in the Tithonian), suggesting the existence of a significantly larger sedimentary basins that had been eroded prior to the Cenomanian transgression event (Upper Cretaceous).

**Keywords** Bohemian Massif · Middle · Upper Jurassic · biostratigraphy · palaeobiogeography

## Introduction

Historically, some of the first studies focused on the Jurassic rocks of North Bohemia were published in the second half of the nineteenth century. Lenz (1870) studied Jurassic strata in

great detail as numerous limestone quarries were explored and, thus, became well exposed. He described numerous Jurassic fossils, including ammonites, belemnites, brachiopods, bivalves, echinoids and so forth. Lenz investigated geological and sedimentological contexts, including the descriptions of a periodic alternation of carbonate and non-carbonate strata. Bruder (1881) followed this research; his intense work includes several papers focused mainly on palaeontology. Bruder systematically described additional ammonites, brachiopods, echinoderms, bryozoans, porifera and belemnites (Bruder 1881, 1882, 1885, 1886, 1887, 1888). The Jurassic rocks of N Bohemia were examined also for prospecting silver, copper and zinc from under-represented ores (e.g. Herrmann and Beck 1897; Chrt 1957). In the second half of the twentieth century, five boreholes were drilled in the studied area (Chrt 1957). A microfacial analysis of Jurassic rocks was provided by Eliáš (1981) and most recently by Valečka (2019).

Modern studies have summarised data, especially in stratigraphically important fossil groups, i.e. ammonites (Hrbek 2014) and calcareous nannoplankton (Holcová and Holcová 2016). An analysis of the ammonite assemblage (part) shows a sub-Boreal provenance under considerable sub-Mediterranean

✉ Jan Geist  
jan.geist@natur.cuni.cz

Katarína Holcová  
katarina.holcova@natur.cuni.cz

Lucie Vaňková  
lucie.vankova@natur.cuni.cz

Martin Mazuch  
martin.mazuch@natur.cuni.cz

Martin Košťák  
martin.kostak@natur.cuni.cz

<sup>1</sup> Institute of Geology and Palaeontology, Faculty of Science, Charles University, Albertov 6, 128 43 Prague 2, Czech Republic

<sup>2</sup> Institute of Geology of the Czech Academy of Sciences, Rozvojová 269, 165 00 Prague 6, Czech Republic

influence. Ammonites indicate exclusive the Upper Jurassic, that is, in the Kimmeridgian and Oxfordian stages (Hrbek 2014). However, calcareous nannoplankton has proved prolonged sedimentation up to the Tithonian stage (Holcová and Holcová 2016).

Belemnites from N Bohemia were studied at a systematic level and have only partly been used as biostratigraphical markers (Bruder 1882; partly mentioned by Hrbek 2014). However, belemnite rostra are one of the most important sources of proxy data for palaeoecological and stratigraphical interpretations because they are relatively taphonomically resistant and preserve an important geochemical data (i.e. carbon and oxygen stable isotopes, strontium isotopes and the content of other elements) incorporated into the rostrum. The obtained values are significant for the palaeoenvironmental reconstructions and geochronology of sedimentary units (McArthur et al. 2007; Wierzbowski and Joachimski 2009; Hoffmann and Stevens 2020). A similar approach has recently been used for the Jurassic–Lower Cretaceous belemnites from the Outer Western Carpathians (Vaňková et al. 2019, 2021). In contrast, no detailed analyses of the Jurassic belemnites from northern parts of the Bohemian Massif have been performed yet.

The latest research has sought to confirm the connection between the Boreal and Tethyan realms through a seaway *via* the Bohemian Massif. A new finding of pebbles of Jurassic sediments in the Coniacian sandstones of the Bohemian Cretaceous Basin (BCB) in N Bohemia has permitted an analysis of the stratigraphical—and probably also palaeogeographical—extent of Jurassic sedimentation in the NW part of the Bohemian Massif (Valečka 2019). Records of pebbles of Jurassic silicites, deposited in Cretaceous and Tertiary rocks, from the vicinity of Svitavy, Moravský Krumlov, Třebíč, Zittau and other localities may indicate a significantly larger sedimentary space of the Jurassic basin(s) (Eliáš 1981; Valečka 2019).

## Geological and stratigraphical settings

The studied area (Fig. 1) is characterised by Permo-Carboniferous, Jurassic and Cretaceous sedimentary units, here accompanied by metamorphic and volcanic rocks dating to the early Palaeozoic to Neoproterozoic (Opletal and Adamová 2001). Permo-Carboniferous deposits are referred to as the Sudetic basins, and they occur along the Lausitanian Fault and in some other areas (Holub et al. 1978).

According to a historical point of view, the upper Callovian (Middle Jurassic) is represented by ten-metre-thick sandstones of the Brtníky Formation without significant fossils (Eliáš 1981). The Oxfordian limestones to dolomitic limestones of the Doubice Formation reach a thickness up to several tens of metres. The Kimmeridgian stage is represented by darker

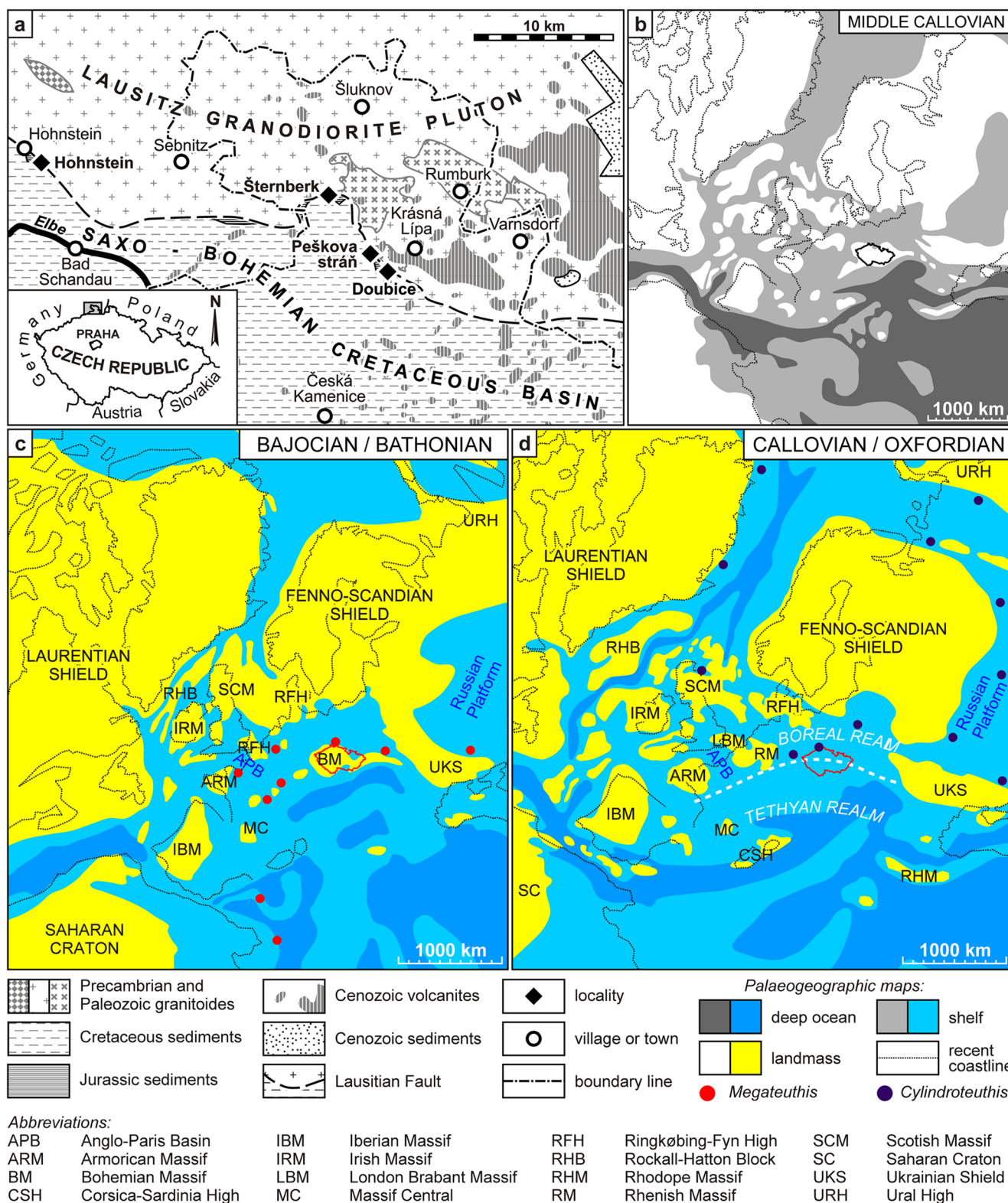
limestones with a reduced thickness (Eliáš 1981). These stratigraphic units need to be reconsidered in the future. It is clear from the fossil record that the Jurassic rocks of N Bohemia have a much more comprehensive stratigraphic range than thought initially.

Sandstones, limestones and dolomites represent the Jurassic age of rocks in N Bohemia with alternating layers of non-carbonate composition (Chrt 1957). The thickness of these rocks is sometimes more than 100 metres [locality Doubice (Vápenka); drill hole D-2] (Chrt 1957). This deepest (204 metres) and most complete drill hole consists of the granitoid basement (0–16 metres), Jurassic sandstones with calcareous dolomite and clay alternating layers (16–70 metres), dolomitised carbonates with pelite sediment layers (70–98 metres), pelite sediments (98–116 metres), dolomitic limestones (116–124 metres), overlain by Cretaceous sandstones (with coal seams) and marine conglomerates with fauna (124–204 metres).

Currently, only non-fossiliferous layers are exposed in the area, so museal material (drill cores and fossils) is used to study these rocks. In situ rock layers are now only be seen in part of the former mining gallery at the locality Doubice (Vápenka) (Fig. 2).

First mentioned by Lenz (1870) a Middle Jurassic age is based on fossils from Saxony, including a doubtful record of *Belemnites giganteus* von Schlotheim, 1820. The beginning of sedimentation during this interval was also mentioned by Bruder (1882, 1885). It was generally suggested that sedimentation in Saxony probably began earlier but without relevant evidence. Generally, the end of sedimentation is presumed during the Kimmeridgian in Saxony; however, in the Bohemian part, it is probably ended later (Eliáš 1981). Based on calcareous nanofossils, a Tithonian age has been recognised by Holcová and Holcová (2016).

**Fig. 1** **a** Schematic geological map of the studied area with an investigated localities (black rhombs): Doubice (Vápenka) – GPS 50°53'46.5"N 14°28'51.1"E, Peškova stráň (Kyjov) – GPS 50°54'22.6"N 14°28'21.5"E, Šternberk (Brtníky) – GPS 50°56'30.0"N 14°26'44.8"E, Hohnstein – GPS 50°58'17.1"N 14°07'15.7"E; **b–d** palaeogeographic reconstructions of the Central Europe, modified after Dercourt et al. (2000), Taheri et al. (2009), Golonka (2011), Wierzbowski and Rogov (2011), Leonowicz (2015), Kettle (2016) and Averianov and Zverkov (2020); **b** palaeogeographic reconstructions of the Central Europe, modified after Dercourt et al. (2000), Taheri et al. (2009), Golonka (2011), Wierzbowski and Rogov (2011), Leonowicz (2015), Kettle (2016) and Averianov and Zverkov (2020); **c** Bathonian/Bajocian palaeogeographic situation in Europe. Red dots represent distribution of the belemnite *Megateuthis* in this interval. Czech Republic with Bohemian Massif is highlighted by red contours; **d** palaeogeographic distribution of typical Boreal belemnite *Cylindroteuthis* (dark purple dots) during the Callovian/Oxfordian transition. Based on southern records of cylindroteuthidid belemnites in Central Europe, the hypothetical boundary between Boreal and Tethyan Realms (dashed line) is reconstructed for this area.



At the locality Doubice (Vápenka) near Krásná Lípa, sequences of rocks with rhythmically alternating layers of dolomitised limestones with the intercalation of fine-grained siltstones developed (Fig. 2). The findings of the micritic

limestones at the Peškova stráň (Kyjov; Khaa) locality indicate rather hemipelagic to almost pelagic sedimentation, suggesting differentiated depositional area. It is notable that all types of deposits mentioned herein are tectonised fragments of

different Jurassic strata that were exposed at different sites along the Lausitanian Fault.

## Material and methods

Institution abbreviations, terminology and geochemical analyses of belemnite rostra

The studied belemnite rostra are deposited in collections [National Museum at Prague, N, ČK; Chlupáč's Museum of the Earth History, Faculty of Science, Charles University, CHMHZ, CHMHZ-MS (Martin Souček collection), CHMHZ-JG (Jan Geist collection); Municipal Museum of Ústí nad Labem, G; Senckenberg Naturhistorische Sammlungen Dresden, MMG-SaJ; Geowissenschaftliche Sammlungen der TU Bergakademie Freiberg, RS]. Several new samples were collected during the fieldwork (CHMHZ-JG). The belemnite material consists of more than 125 specimens, including 40 complete and/or clearly determinable rostra. Nannoplankton samples come from 15 newly found rocks (CHMHZ-JG, CHMHZ-MS; locality Pešková stráň) and 3 samples from museal collection (N 207/1, N 207/2, N 207/3; locality Šternberk).

The terminology of belemnite morphology follows Pugaczewska (1961) and Hoffmann and Stevens (2020). The following parameters are used: MLD (maximum lateral diameter), d-s (lateral diameter) and d-v (dorsoventral diameter). The length of the rostra is divided as: small (< 50 mm), medium (< 150 mm) and large (> 150 mm). The cross-section of the rostrum was used as a reliable determining feature. In one sample (No. CHMHZ-JG-1/1), a vertical section of the rostrum was used for the correct taxonomical determination. In the taxonomical description, the term outline is used as a shape in the dorsoventral view of the rostrum and profile as a lateral shape in the lateral view of the rostrum. Compression is referred to herein as lateral flattening, while depression reflects dorsoventral narrowing.

For an accurate systematic determination and evaluation of the morphology of the alveolus, one rostrum (No. N 207/1) was studied using micro-CT techniques (Phoenix NANOMEX 180 device) at Czech Technical University, Laboratory for Development and Implementation at the Faculty of Electrical Engineering (Fig. 3).

Diagenetic alterations of the rostra and their suitability for geochemical analyses were verified using the double-checking method. Cross-sections of rostra were analysed in thin sections (max thickness 50 µm) by the cathodoluminescence technique ('Cold-stage' CITL 8200 CLmk4, Cambridge Image Technology Ltd.) with a magnification of 2.5x10 under a modified microscope (Avantes spectrometer connected to a Leica DMLP microscope) equipped with a vacuum pump as well as electrical voltage and current source

(U=10–13 kV, I= 300 µA) at the Institute of Geochemistry, Mineralogy and Mineral Resources, Faculty of Science, Charles University (Fig. 4).

Suitable parts of the non-affected calcite were thoroughly separated by a drilling machine with diamond and/or corundum drills (the apical line and its vicinity and last growing layers were removed). The samples were then washed in an ultrasonic bath, ground to analytical fineness in agate mortar and divided into subsamples.

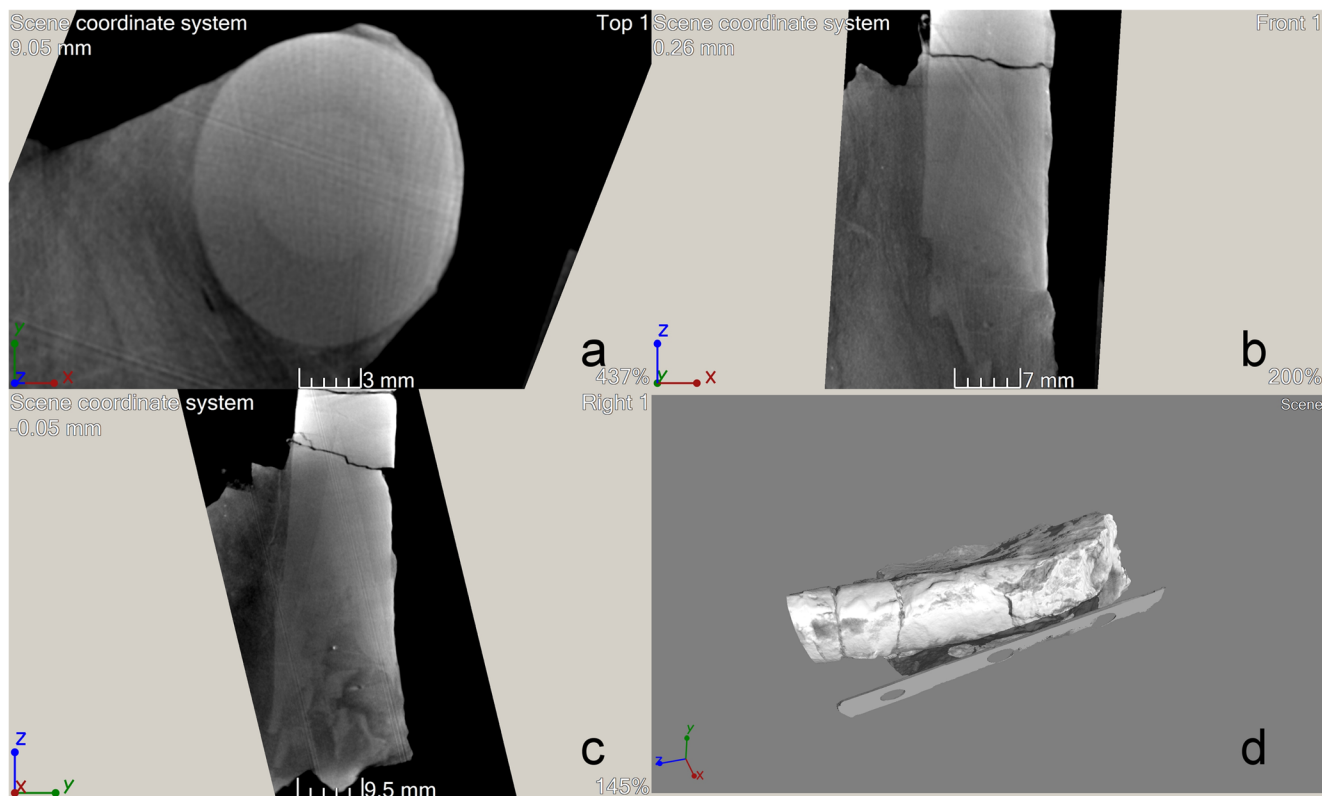
Part of the subsamples was transferred into a Savillex vial, and 1 ml of 14M nitric acid was added. After dissolution, the material was diluted with deionised water (volume of 20 ml). The contents of the main and trace elements of Ca, Mg, Sr, Fe and Mn were analysed by a 5110 VDV Agilent ICP-OES spectrometer at the Laboratory of the Geological Institutes at Charles University in Prague. The 20 ml liquid sample was diluted in 2% HNO<sub>3</sub> 100× for a Ca analysis and 2× for analysis of the other elements. The amount of Rb was measured using an ICP-MS (Thermo Scientific XSeries II).

Strontium was isolated from the calcite matrix using exchange chromatography techniques with Triskem's Sr resin (Míková and Denková 2007) and analysed by a Neptune Plus high resolution MC-ICP-MS instrument (ThermoFisher Scientific) in static mode at the Stable and Radiogenic Isotope Research Laboratory at Charles University in Prague. The analytical mass bias was corrected to <sup>88</sup>Sr/<sup>86</sup>Sr=8.375209 [defined as δ<sup>88/86</sup>Sr=0 relative to NIST SRM 987 (Nier 1938)]. The overall analytical uncertainty (external error) is given by repeated analyses of the SRM 987 standard, resulting in <sup>87</sup>Sr/<sup>86</sup>Sr=0.710312 ± 0.001 (2 σ; n=6).

Pilot analyses of oxygen (<sup>18</sup>O/<sup>16</sup>O) and carbon (<sup>13</sup>C/<sup>12</sup>C) isotopic ratios were processed from the rest of the subsamples using a GasBench II (ThermoFisher Scientific) machine equipped with a CTC Combi-Pal (PALSYSTEM) autosampler linked with a MAT253 isotope ratio mass spectrometer (ThermoFisher Scientific) in a Continuous Flow IV (ThermoFisher Scientific) system at the Stable and Radiogenic Isotope Research Laboratory at Charles University in Prague. The internal precision (SD) measured over these six peaks is typically 0.02 and 0.08 for raw δ<sup>13</sup>C and δ<sup>18</sup>O values (n=16), respectively, given a sample size above 50 mg. Calibration of the raw results versus the V-PDB scale was achieved using in-house calcite standards (after linearity correction) that were calibrated against NBS-18, L-SVEC and IAEA-603 international reference materials (IAEA, Vienna, Austria).

**Fig. 2** Details of limestone (partly dolomitised) and siltstone alternations at the Doubice (Vápenka) locality, here showing the wall of the gallery (photo by Aleš Novák; length of hammer 30 cm).





**Fig. 3** Micro-CT visualisation with visible alveolus (*Megateuthis suevica*; N 207/1). **a** cross-section, **b** dorsal view, **c** ventral view, **d** sample examined in the machine holder (visualisation by Petr Ježdík,

Laboratory for Development and Implementation at the Faculty of Electrical Engineering, Czech Technical University).

### Calcareous nannoplankton

For calcareous nannofossils, 13 samples obtained by separating them from the surrounding rocks and alveolus of belemnite rostra were inspected [CHMHZ-JG-9/2 (alveolus), CHMHZ-JG-9/3 (surrounding matrix near alveolus) and CHMHZ-JG-9/4 (surrounding matrix near apex); CHMHZ-JG-10/2 and CHMHZ-JG-10/3 (surrounding matrix); CHMHZ-JG-15 (sample with brachiopod); CHMHZ-JG-1/2 and CHMHZ-JG-1/3 (surrounding matrix); N 207/2, N 207/3 and N 207/4 (surrounding matrix); CHMHZ-MS-5292/2 and CHMHZ-MS-5292/3 (surrounding matrix)]. Ca-nannoplankton was studied from smear slides under an optical microscope (polarised and normal light, magnification 1000x) and in a scanning electron microscope (SEM). Because the samples originated from museal items with unique macrofossils, only a very restricted volume of rock material was available for the nannoplankton study (1–3 mm<sup>3</sup>), especially from the belemnite alveolus infill. Therefore, no method for the concentration of nannofossils could be applied. The rock material was suspended in distilled water, and this suspension was dropped to a SEM stub or cover glass to prepare the smear slides. Two smear slides were prepared and inspected from every sample. For the determination of nannoliths, the

taxonomical concept presented in the Nannotax database (Young et al. 2021) was applied.

### Results

#### Systematic belemnite palaeontology

Cephalopoda Cuvier, 1797

Coleoidea Bather, 1888

Belemnoidea Gray, 1849

Belemnitida Zittel, 1895

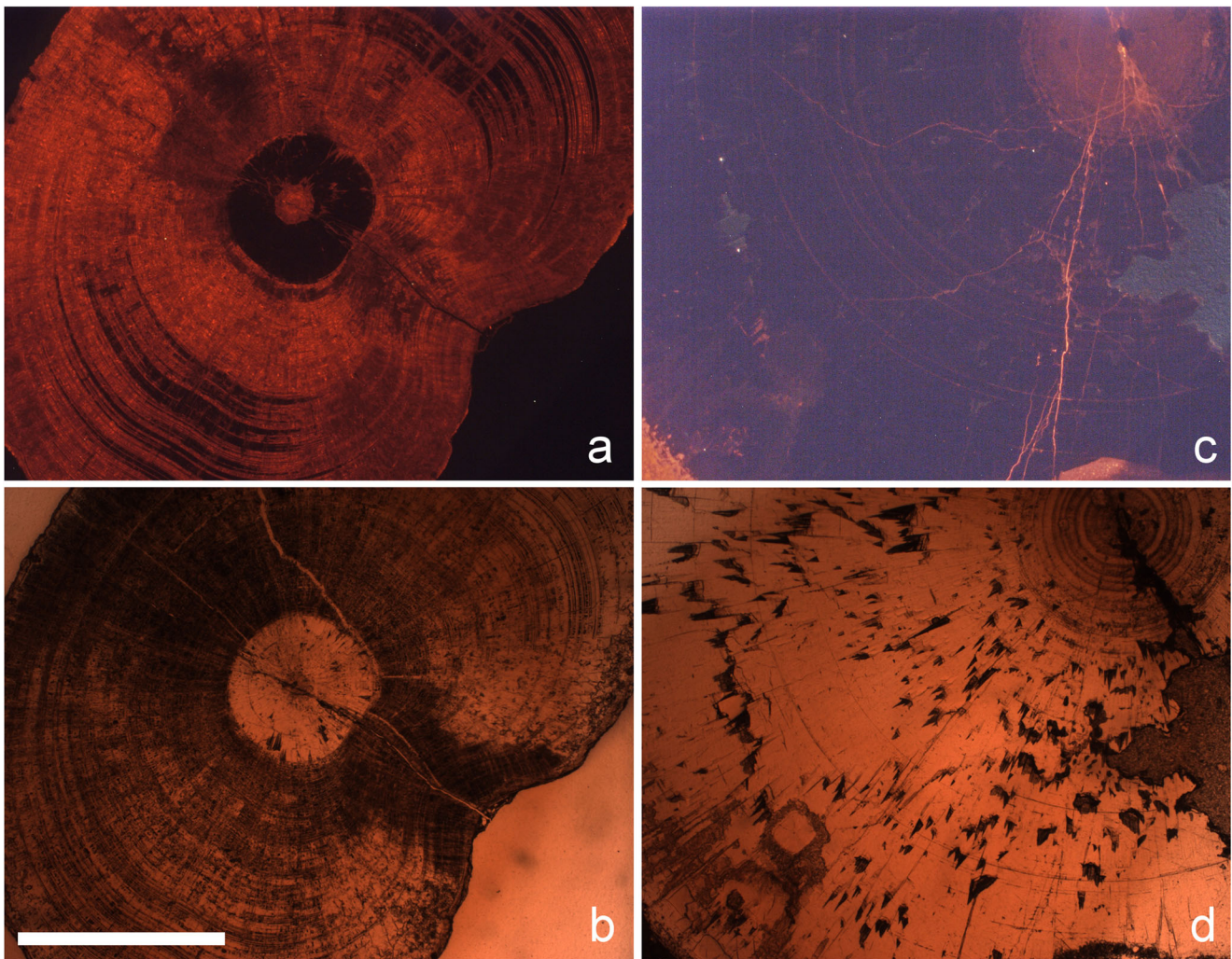
Suborder Belemnopseina Jeletzky, 1965

Family Belemnopseidae Naef, 1922, emend. Jeletzky, 1946

Genus *Hibolithes* Montfort, 1808

**Type species:** *Hibolithes hastatus* Montfort, 1808; p. 384–385, pl. 47, by monotypy (= *Belemnites sulcatus* v. Münster, 1830 *sensu* Riegraf et al. (1998), *nomen dubium*)

**Remarks:** The monotypical genus *Hibolithes* Montfort, 1808 described from Callovian-Oxfordian black marls located in south-eastern part of Gap (France) is currently under revision. The type species *H. hastatus* by Montfort (1808) is thus



**Fig. 4** Cathodoluminescence of cross-sections of selected rostra. **a, b** *Belemnopsis* sp. indet. (CHMHZ-JG-14); **c, d** *Hibolithes hastatus* (CHMHZ-JG-13b); **a, c** cathodoluminescence images (bright orange colour corresponds to the high Mn content); **b, d** normal light

currently without a valid determination but with clear features indicating an Early Cretaceous duvaliid (Janssen 2021). Therefore, the alternative term *Hibolithes auctorum* is preferred. Because the new status is not yet fully defined and used in an effort to avoid inconsistencies, we follow the original designation. Future detailed investigation of the validity of this taxon is necessary.

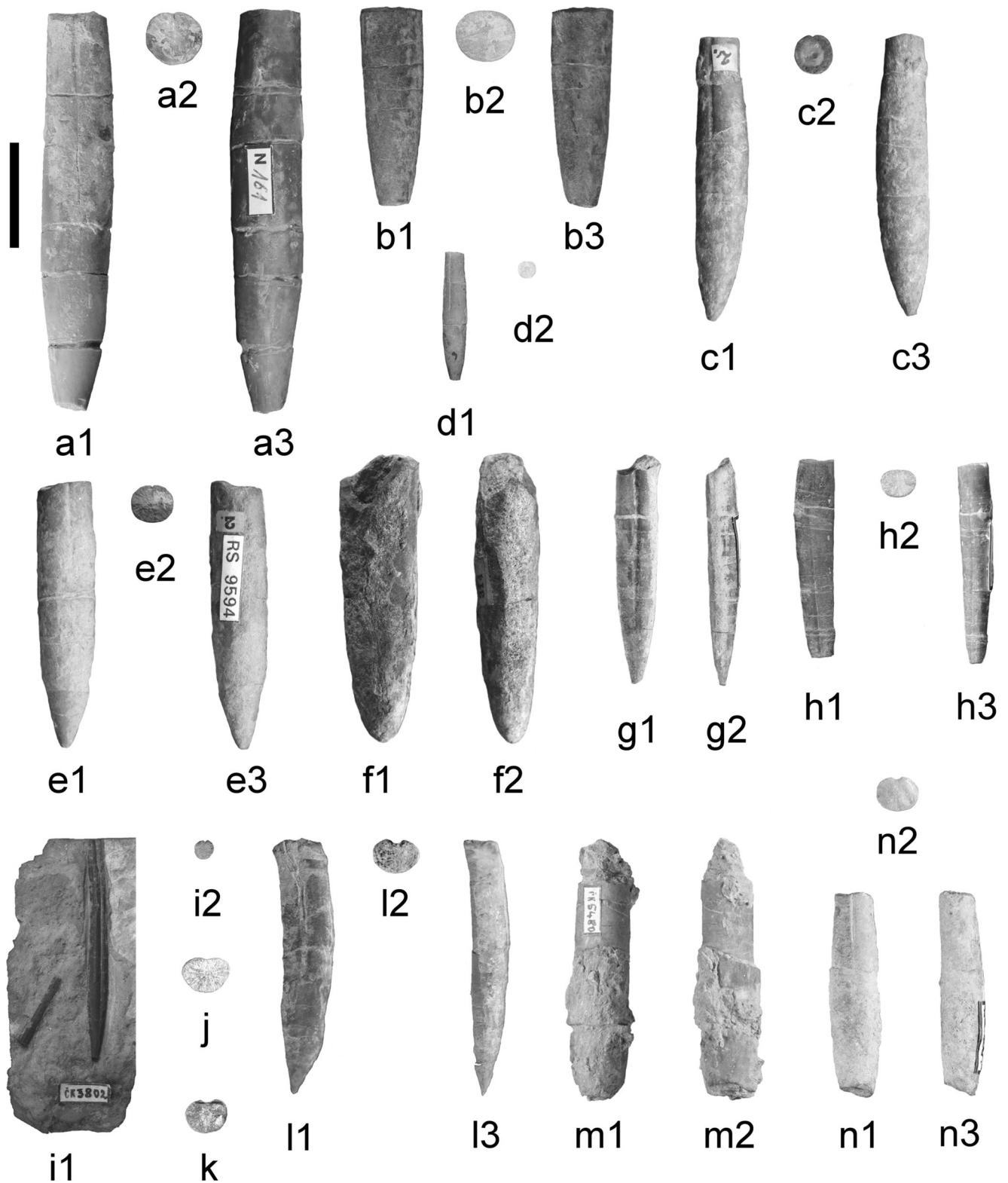
*Hibolithes hastatus* Montfort, 1808  
(Fig. 5 a–e)

- 1808 *Hibolithes hastatus* Montfort, p. 384–385, pl. 47  
 1827 *Belemnites hastatus* de Blainville; p. 71–72, pl. 2, figs. 4–4a  
 1827 *Belemnites semihastatus* de Blainville; p. 72–74, pl. 2, figs. 5 c–i  
 1831 *Belemnites semihastatus* von Zieten; p. 29, pl. 22, fig. 4  
 1849 *Belemnites semihastatus rotundus* Quenstedt; p. 440, pl. 29, figs. 8–11

- 1870 *Belemnites canaliculatus* (Schlotheim); Lenz, p. 27  
 1874 *Belemnites hastatus* (de Blainville); Alth, p. 229, pl. 4, figs. 1–3  
 1922 *Hibolithes hastatus* Blainville; Naef, p. 249, fig. 71, text-figs. 71 k, p, r, 89 f  
 1981 *Hibolithes (Hibolithes) hastatus hastatus* Montfort; Riegraf, p. 81–84, 199–201, pl. 6, figs. 45–47  
 2002 *Hibolithes hastatus* Montfort; Mariotti, p. 17, pl. 1, figs. 1–6

**Material and localities:** 5 complete juvenile and adult rostra, 18 nearly complete rostra with missing alveolar part or apex (with measurable dimensions); (No. MMG-SaJ 21, N 01–04, N 161, N 163, N 185, N 189–192, N 191–192, N 194, N 196–199, CHMHZ-JG-9, CHMHZ-JG-13a, b, c); and additionally 5 fragments from Hohnstein (Saxony, Germany), Šternberk and Peškova stráň.

**Description:** The hastate rostrum with an eccentric apical line inclined to the dorsal side. The rostrum of a medium size, the



length of the rostrum reaches a maximum of about 80 mm. The MLD lies approximately at 3/4 of the length of the rostrum where the distinct ventral groove disappears. Doppel-linien well developed. The alveolar area is compressed, while the rostrum solidum is depressed. The cross-section of the

rostrum is circular and compressed to depressed from the alveolar part towards the apex.

**Remarks:** *Hibolites hastatus* belongs to the most widespread Jurassic belemnites. Numerous typical morphological features (e.g. ventral groove ending at place of the MLD,



◀ **Fig. 5** Belemnites of the families Belemnopseidae and Duvaliidae. **a** *Hibolithes hastatus* Montfort, 1808; N 161 (1 – ventral view, 2 – cross-section, 3 – lateral view); locality Šternberk (Brtníky). **b** *Hibolithes hastatus* Montfort, 1808; ČK 5479 (1 – ventral view, 2 – cross-section, 3 – lateral view); locality Šternberk (Brtníky). **c** *Hibolithes hastatus* Montfort, 1808; RS 9595 (1 – ventral view, 2 – cross-section, 3 – lateral view); locality Peškova stráň (Kyjov). **d** *Hibolithes hastatus* Montfort, 1808 (juvenile); N 198 (1 – ventral view, 2 – cross-section); locality Šternberk (Brtníky). **e** *Hibolithes hastatus* Montfort, 1808; RS 9595 (1 – ventral view, 2 – cross-section, 3 – lateral view); locality Peškova stráň (Kyjov). **f** *Belemnopsis* sp. indet (von Schlotheim, 1820); G 17 667 (1 – ventral view, 2 – lateral view); locality Doubice. **g** *Belemnopsis canaliculata* (von Schlotheim, 1820); N 19 (1 – ventral view, 2 – lateral view); locality Šternberk (Brtníky). **h** *Belemnopsis canaliculata* (von Schlotheim, 1820); N 68 (1 – ventral view, 2 – cross-section, 3 – lateral view); locality Šternberk (Brtníky). **i** *Belemnopsis latesulcata* (Voltz, 1832) in Thurmann (1832); N 206 (1 – ventral view, 2 – cross-section); locality Peškova stráň (Kyjov). **j** *Belemnopsis latesulcata* (Voltz, 1832) in Thurmann (1832); N 201 (cross-section); locality Šternberk (Brtníky). **k** *Belemnopsis latesulcata* (Voltz, 1832) in Thurmann (1832); N 202 (cross-section); locality Šternberk (Brtníky). **l** *Belemnopsis subhastata* (Zieten, 1831); CHMHZ-JG-12 (1 – ventral view, 2 – cross-section, 3 – lateral view); locality Šternberk (Brtníky). **m** *Rhopaloteuthis sauvanausa* (d’Orbigny, 1842); N 187 (1 – ventral view, 2 – lateral view); locality Šternberk (Brtníky). **n** *Rhopaloteuthis sauvanausa* (d’Orbigny, 1842); N 20 (1 – ventral view, 2 – cross-section, 3 – lateral view); locality Šternberk (Brtníky). The scale bar equals 2 cm.

characteristic compression and depression at specific parts of rostra) easily determine this species. *H. hastatus* is well distinguishable from *H. semihastatus* (Blainville, 1827) and *H. beyrichi* (Oppel, 1857) because of its distinct ventral groove and different rostra diameters. In addition, the species *H. beyrichi* already occurs in the Bathonian (Mariotti 2002).

**Occurrence:** Tethyan Realm and adjacent areas, including the sub-Boreal Realm. Upper Callovian–middle Oxfordian strata at Monte Kumeta (Sicily, southern Italy) (Mariotti 2002), Bathonian–Oxfordian in Poland (Pugaczewska 1961); England, Czech Republic (Bruder 1881, this study), Portugal, Algeria, Caucasus, India, Madagascar and other regions (see Mariotti et al. 2013 and references therein).

Genus *Belemnopsis* Bayle, 1878

**Type species:** *Belemnites apiciconus* Blainville, 1827 [= *Belemnites sulcatus* Miller, 1826 by subsequent designation of Douvillé (1879), depicted as *Belemnopsis sulcata* (Miller, 1826) by Bayle (1878)] (Mitchell 2015).

**Remarks:** The genus *Belemnopsis* Bayle, 1878 is taxonomically inconsistent. There are many opinions regarding the correct classification of these rostra (e.g. Douvillé 1879; Mitchell 2015). This genus includes many morphologically similar species that have been reduced and reassigned over the years (see Schlegelmilch 1998). According to a large number of rostra from the Šternberk locality, Bruder (1882) defined a new species of the genus *Belemnites* (now *Belemnopsis*):

*B. postcanaliculatus* Bruder, 1882. Nevertheless, detailed analyses of the samples have denied the validity of this taxon, and the rostra have been redefined as *Belemnopsis canaliculata* and *Belemnopsis subhastata* (see below).

*Belemnopsis canaliculata* (von Schlotheim, 1820)  
(Fig. 5 g–h)

1820 *Belemnites canaliculatus* von Schlotheim, p. 49

1831 *Belemnites canaliculatus* von Schlotheim; Zieten, p. 27, pl. 21, figs. 3 a–e

1842 *Belemnites canaliculatus* von Schlotheim; d’Orbigny, p. 108–110, pl. 13, figs. 1–5

1882 *Belemnites postcanaliculatus* Bruder, p. 457–458, pl. 1, figs. 5a, 5b

1920 *Belemnopsis canaliculata* (von Schlotheim); Bülow-Trummer, p. 127

1953 *Belemnites canaliculatus* von Schlotheim; Różycki, p. 325

1961 *Belemnopsis canaliculatus* (von Schlotheim); Pugaczewska, p. 143–146, pl. 9, text-fig. 13

**Material and localities:** 2 almost complete rostra with missing alveolar part and apex (No. N 19, N 68; Šternberk).

**Description:** Mostly cylindrical to hastate rostra, small– to medium– sized in length. The length of the apical part up to 30 mm. The ventral side is slightly concave. The smallest d-s diameter is in the alveolar region. A significantly wide and deep ventral groove well developed. Indistinct doppelinien are visible only on very well-preserved rostra, continuing along the entire length of the rostrum. In some specimens, a mucro is developed. The cross-section of the rostrum is kidney-shaped, rarely circular in the apical part.

**Remarks:** A typical morphological feature of this species is a very wide and deep ventral groove that, in many cases, extends to the end of the apex. According to Pugaczewska (1961), the stratigraphical range of this species is from the Bathonian to Oxfordian. However, later authors reported a stratigraphic distribution only from the Bajocian to Bathonian (e.g. van Diggelen 1986). This stratigraphic enigma has not yet been resolved. This problem is also linked to unclear systematic and taxonomic classifications. *Belemnopsis canaliculata* might be misinterpreted with morphologically closely related taxa such as *B. bessina* (d’Orbigny, 1842) or *B. subhastata* (Zieten, 1831). Nevertheless, *B. subhastata* has a longer apex and generally, the ventral groove does not reach the apex.

**Occurrence:** Bathonian–lower Oxfordian; Tethyan and sub-Boreal realms – Europe, Asia (Caucasus, India), Australia (Pugaczewska 1961), Czech Republic (Lenz 1870, this study).

*Belemnopsis latesulcata* (Voltz, 1832) in Thurmann (1832)  
(Fig. 5 i–k)

- 1832 *Belemnites latesulcatus* Voltz; Thurmann, p. 27  
 1893 *Belemnites latesulcatus* Voltz; Riche, p. 327–328, pl. 2, figs. 13–17  
 non1910 *Belemnites latesulcatus* Voltz; Benecke, p. 129–132, pl. 1, figs. 1–2 = *Belemnopsis canaliculata* (von Schlotheim, 1820)  
 1920 *Hibolites latesulcatus* (Voltz); Bülow-Trummer, p. 145  
 1961 *Belemnopsis latesulcatus* (d’Orbigny); Pugaczewska, p. 150–153, pls. 11–12, fig. 1, text-fig. 14  
 2002 *Belemnopsis latesulcatus* (Voltz in Thurmann); Mariotti, p. 20, 22, pl. 2, figs. 3–6  
 2013 *Pachybelemnopsis latesulcatus* (Voltz in Thurmann); Mariotti et al., p. 4, pl. 3, fig. A

**Material and localities:** 1 complete rostrum (No. N 206; Peškova stráň) and 2 fragments (No. N 201, N 202; Šternberk).

**Description:** Small, cylindrical to slightly hastate and canaliculated rostrum. The apical part is up to 15 mm long. The MLD approximately at 1/3 (in juveniles) and at 1/2 (adults) of the length of the rostrum. The smallest d-s diameter is positioned in the alveolar part. The wide ventral groove extends almost to the apex, and the rostrum is strongly depressed. The apical part is relatively short, sometimes with mucro. The cross-section of the rostrum is circular to kidney-shaped and depressed.

**Remarks:** Distinctive keel-shaped lateral walls extending almost along the entire length of the rostrum (with the exception of the rostrum cavum and apex) are the most significant morphological features of this taxon. These walls occur only in the adult stage. *B. latesulcata* can also be distinguished from other related taxa by its relatively smaller size. The dorsal bulging of the rostrum is also the most prominent feature compared to other representatives. The species was originally described as *Belemnites latesulcatus* by Voltz (1830), nevertheless it has taxonomically been established by Thurmann (1832). The first illustration of this species was given by Benecke (1910) (Mariotti 2002), however, the depicted specimen does not correspond to typical representatives of *B. latesulcata*.

**Occurrence:** Bathonian–lower Oxfordian; Tethyan Realm – England, Poland, Algeria, Italy and other regions (Mariotti 2002, and references therein), Czech Republic (this study).

*Belemnopsis subhastata* (Zieten, 1831)  
 (Fig. 5 l)

- 1831 *Belemnites subhastatus* Zieten, p. 27, pl. 21, figs. 2 a–e  
 1882 *Belemnites postcanaliculatus* Bruder, p. 457–458, pl. 1, figs. 4a–4b, 5a–5b  
 1920 *Hibolites subhastatus* (Zieten); Bülow-Trummer, p. 154–155  
 1953 *Belemnites (Hibolites) subhastatus* Zieten; Różycki, p. 326  
 1961 *Belemnopsis subhastatus* (Zieten); Pugaczewska, p. 154–157, pl. 12, fig. 2, pl. 13, figs. 1–7, text-fig. 15

- 1998 *Belemnopsis subhastata* (Zieten); Schlegelmilch, p. 81, pl. 18, figs. 1–2  
 2016 *Belemnopsis subhastata* (Zieten); Dzyuba, p. 51–52, pl. 1, figs. 2 A–E

**Material and localities:** 1 complete and 2 almost complete rostra (No. CHMHZ-JG-12, N 162, RS 9594; Šternberk).

**Description:** Medium-sized rostra, cylindrical to hastate in shape and considerably elongated. The ventral side is slightly concave. The MLD is located at approximately 1/2 of the rostrum length. The ventral groove is initially pronounced and visibly widened towards the apex, where it gradually disappears. Doppellinien are observed to approximately 1/2 of the rostrum length. In the proximal part, doppellinien are inclined to the ventral side of the rostrum and decline in the distal part. The apex is quite elongated and pointed. The cross-section is slightly compressed in the proximal part and depressed in the distal part, except for the apex, where it is circular.

**Remarks:** This species shows the closest similarity to *B. bessina*; however, it has a less pronounced ventral groove and it is slightly more elongated. *B. subhastata* may be misinterpreted as *B. canaliculata*, but the latter taxon differs regarding the characteristics of the ventral groove, which is longer and more pronounced than in *B. subhastata*. Moreover, *B. canaliculata* is more dorsoventrally depressed. The relationships of *B. subhastata* to the genus *Hibolites* have been resolved (e.g. Bülow-Trummer 1920) and the species is firmly entrenched within the genus *Belemnopsis* Bayle, 1878.

**Occurrence:** Bathonian–Callovian; Tethyan Realm with slight overlap to the sub-Boreal Realm – England, France, Germany, Poland, Serbia, India and other regions (Pugaczewska 1961 and references therein), Czech Republic (Bruder 1882, this study).

*Belemnopsis* sp. indet.  
 (Fig. 5 l)

**Material and localities:** 1 incomplete rostrum (No. G 17 667; Doubice), 8 belemnite fragments (No. N 185–188; ?Šternberk, N 203–205, CHMHZ-JG-14; Šternberk).

**Description:** Rostra of small to medium size, in many cases with a significant wide and deep ventral groove. The rostrum depression is well visible, cross-sections are characteristically kidney-shaped.

**Remarks:** Mostly small fragments with some morphological variability, indeterminable features for closer taxonomic classification. Because of taxonomic uncertainties and the wide stratigraphical range of the studied rocks, the samples are not included in the final stratigraphical evaluation.

**Occurrence:** The genus *Belemnopsis* is known from the Bajocian–lowermost Hauterivian of Europe, Africa, Madagascar, Pakistan, India, Tibet, South East Asia, Australia, New

Zealand, western Antarctica and South America (Mariotti 2002).

Family Duvaliidae Pavlow, 1914

Genus *Rhopaloteuthis* Lissajous, 1915

**Type species:** *Belemnites sauvanausus* d’Orbigny, 1842, p. 128–130, pl. 21, figs. 1–10 by subsequent diagnosis of Lissajous (1915).

*Rhopaloteuthis sauvanausa* (d’Orbigny, 1842)

(Fig. 5 m–n)

1842 *Belemnites sauvanausus* d’Orbigny, p. 128–130, pl. 21, figs. 1–10

1878 *Hibolites Sauvaneau* (d’Orbigny); Bayle, p. 128, pl. 29, figs. 5–7

1882 *Belemnites Sauvanausus* d’Orbigny; Bruder, p. 458, pl. 1, fig. 6

1900 *Hibolites Sauvanaui* (d’Orbigny); Lorient, p. 6, pl. 2, fig. 2

1925 *Belemnites sauvanausus* d’Orbigny; Lissajous, p. 41–43, 131, pl. 23

1961 *Rhopaloteuthis sauvanausus* (d’Orbigny); Pugaczewska, p. 194–195, pl. 6, figs. 7–9

2002 *Rhopaloteuthis sauvanausa* (d’Orbigny); Mariotti, p. 27, pl. 4, figs. 4, 7

**Material and localities:** 2 almost complete rostra (No. N 20, N 187); Šternberk.

**Description:** Thick and short club-shaped rostrum with a significantly concave ventral side. The MLD is located at approximately 2/3 of the length of the rostrum. The deeply incised dorsal groove often reaches the place of the MLD. The apical line is eccentric and slightly inclined to the dorsum. The deep alveolus reaches up to 1/3 of the rostrum length. Weak lateral furrows are visible. The apex is short, ending with a mucronate tip. The cross-section of the rostrum is circular in the rostrum cavum and gradually changes to a square in the MLD part.

**Remarks:** *Rhopaloteuthis sauvanausa* belongs to the most abundant species within the genus *Rhopaloteuthis* in the Oxfordian. It shows the highest similarity to *R. argoviana* (Mayer, 1863); however, *R. sauvanausa* has a shorter and more robust rostrum than the latter species.

**Occurrence:** Upper Callovian–middle Oxfordian; Tethyan Realm with overlap into the sub-Boreal Realm – Germany, Poland, Czech Republic (Bruder 1882, this study), Italy, Turkey, Algeria, India, Madagascar and other regions (Mariotti 2002).

Suborder Belemnitina Zittel, 1895

Family Megateuthididae Sachs and Nal’njaeva, 1967

Genus *Megateuthis* Bayle, 1878

**Type species:** *Belemnites giganteus* von Schlotheim, 1820 (younger synonym for *Belemnites suevicus* Klein, 1773) by subsequent designation of Bayle in Douvillé (1879, p. 91).

*Megateuthis suevica* (Klein, 1773)

(Fig. 6 b, c)

1773 *Belemnites suevicus* Klein, p. 27–28, pl. 7, fig. 2

1820 *Belemnites giganteus* von Schlotheim, p. 45–46

1830 *Belemnites Aalensis* Voltz, p. 60–62, pls. 4, 7, fig. 1

1842 *Belemnites giganteus* von Schlotheim; d’Orbigny, p. 112–117, pls. 14, 15

1882 *Belemnites* conf. *semihastatus* Blainville; Bruder, p. 470–471

1911 *Megateuthis giganteus* (von Schlotheim); Wetzel, p. 219, pl. 19, figs. 7–8; p. 221

1916 *Mucroteuthis giganteus* Abel, p. 126, 140, pl. 49

1925 *Megateuthis giganteus* (von Schlotheim); Lissajous, p. 23–24, 90, pl. 12

1953 *Belemnites (Megateuthis) giganteus* von Schlotheim; Różycki, p. 326

1961 *Megateuthis giganteus* (von Schlotheim); Pugaczewska; p. 134–142, pls. 7–8

1998 *Megateuthis gigantea* (von Schlotheim); Schlegelmilch, p. 75, pl. 13, figs. 1–2, pl. 14, figs. 3–5

2000 *Megateuthis suevica* (Klein, 1773); Riegraf, p. 289–290, figs. 11–12, 19 (with additional synonymy)

2008 *Megateuthis suevica* (Klein, 1773); Weis and Mariotti, p. 166, pl. 6, figs. 1–3

**Material and localities:** 1 complete subadult rostrum (No. N 207/1; Šternberk) and 2 fragments (No. CHMHZ-JG-1/(1–4); Hohnstein, No. G 17 674; Šternberk).

**Description:** Conical rostrum with an obtuse angle of apex termination in the juvenile stage. During ontogeny, the tip of the apex stretches and turns polluted and can grow out into an epirostrum. The rostrum is long and elongated, reaching up to 100 mm. Apical grooves in the juvenile stages reach up to 2/3 of the rostrum length proximal to the apex (not seen in our material). Longer grooves are on the dorsolateral sides and shorter on the ventrolateral sides. In the gerontic stage, this range is shortened to about 1/3 of the rostrum length proximal to the apex. Characteristic of geronts are wrinkles (furrows) placed around the apical grooves. In the juvenile stage, the alveolus reaches up to approximately 1/3 of the rostrum length. During ontogeny, it shrinks to 1/5 of the length of the rostrum. The apex is long, compressed in the cross-section, circular to ovate and quadrate in adulthood.

**Remarks:** The taxonomic status of *M. suevica* is rather complicated. According to a priority, the taxon should be described as *M. suevica* (Klein, 1773). However, Klein’s (1773) figured specimen has been lost. Von Schlotheim

(1820) established the new species *Belemnites giganteus* based on 20 specimens, but the holotype was not designated. Thereafter, the lectotype of *B. giganteus* was designated by Riegraf et al. (1998, p. 219–220). For detailed and thorough discussion, see Riegraf (2000). In the current study, we prefer the concept of the taxonomic name *M. suevica*, because it has been used steadily for last 20 years (Riegraf 2000; Weis 2006; Arkadiev and Dzyuba 2021). Moreover, Riegraf (2000, p. 290) noted that *B. giganteus* von Schlotheim, 1820 is a so often misunderstood species, which lacks any type figure thus far that it could be supposed to be a *nomen dubium*. In *M. gigantea*, *M. suevica* respectively, a possible sexual dimorphism has been described (e.g. d'Orbigny 1842; Hoffmann and Stevens 2020) expressed by the epirostrum, the apical grooves, furrows characteristics or connection with the bulging of the ventral side of the rostrum surface (Pugaczewska 1961). The presence of the epirostrum may, however, represent an adaptation to a purely pelagic way of life (e.g. Hoffmann and Stevens 2020). Possible sexual dimorphism was discussed many times; for example, the species *Megateuthis elliptica* (Miller, 1826) or *M. acuminata* (Simpson, 1855) were considered males and *M. gigantea*, *M. aalensis* (Voltz, 1830) or *M. longa* (Voltz, 1830) as females (d'Orbigny 1842). These hypotheses were discussed mainly based on the synchronous (or almost synchronous) occurrences of these taxa. With the exception of *M. elliptica*, however, some of these taxa may represent only intraspecific varieties. The concept of sexual dimorphism is still not completely resolved. *M. gigantea* differs from *M. elliptica* by having an obtuse apex and more conical profile and outline, with a cross-section that is more rounded across the entire rostrum length in *M. suevica* (Fig. 6c2). The stratigraphic range is similar. Both taxa are known from the *Propinquans* to *Parkinsoni* zones (doubtful in *M. suevica* = *M. gigantea*; Weis and Mariotti 2008). *M. elliptica* seems to have a wider range (see below). These taxa are common especially in the *Humphriesianum* Zone. Bruder (1882) considered some fragments from the N Bohemia as *B. giganteus* but did so without comparative evidence. After micro-CT investigation (Fig. 3) and detailed analyses of the cross-sections, we have recognised *M. suevica* and probably also *M. elliptica* (see below) in the studied material.

**Occurrence:** Lower Bajocian (*Propinquans*–*Humphriesianum* zones) (Schlegelmilch 1998; Weis and Mariotti 2008; Ippolitov 2018); France, Great Britain, Germany, Luxembourg (Weis and Mariotti 2008), *Humphriesianum* Zone of the Northern Caucasus (Gulyaev et al. 2015); Czech Republic (Bruder 1882; this study).

*Megateuthis* cf. *M. elliptica* (Miller, 1826)

(Fig. 6f)

? 2006 *Megateuthis elliptica* (Miller, 1826); Weis, p. 157, figs. 9–10 (with additional synonymy)

? 2008 *Megateuthis elliptica* (Miller, 1826); Weis and Mariotti, pl. 7, fig. 1

**Material and localities:** A single fragment (No. MMG-SaJ 10) from the Saxonian part of the Lausitian Fault; Hohnstein.

**Description:** The cross-section is typically ovate. The ventral flattening is lacking. The fragment represents the middle part of the rostrum solidum.

**Remarks:** According to Riegraf (2000) and Weis and Mariotti (2008), the important difference between *M. suevica* and *M. elliptica* can be observed in the cross-section: *M. suevica* is more rounded while *M. elliptica* is more ovate within the entire rostrum. Moreover, in *M. elliptica* the rostrum lacks the ventral flattening and/or depression. Therefore, we assume that the incomplete specimen from Hohnstein belongs to *M. elliptica*. Generally, specimens of *M. elliptica* differ in size in various stratigraphical intervals. Although smaller rostra (reaching up to 250 mm) are observed in the *Laeviuscula* and *Propinquans* zones, huge specimens (600–700 mm long; corresponding to the specimen MMG-SaJ 10) are known from the *Humphriesianum* Zone (Weis and Mariotti 2008). Bajocian and Bathonian megateuthid taxa are considered to be a typical sub-Boreal elements (e.g. Doyle 1987), but they occasionally occur in the northern Tethyan areas (Fig. 1) (e.g. Calabria and others; Mariotti et al. 2007).

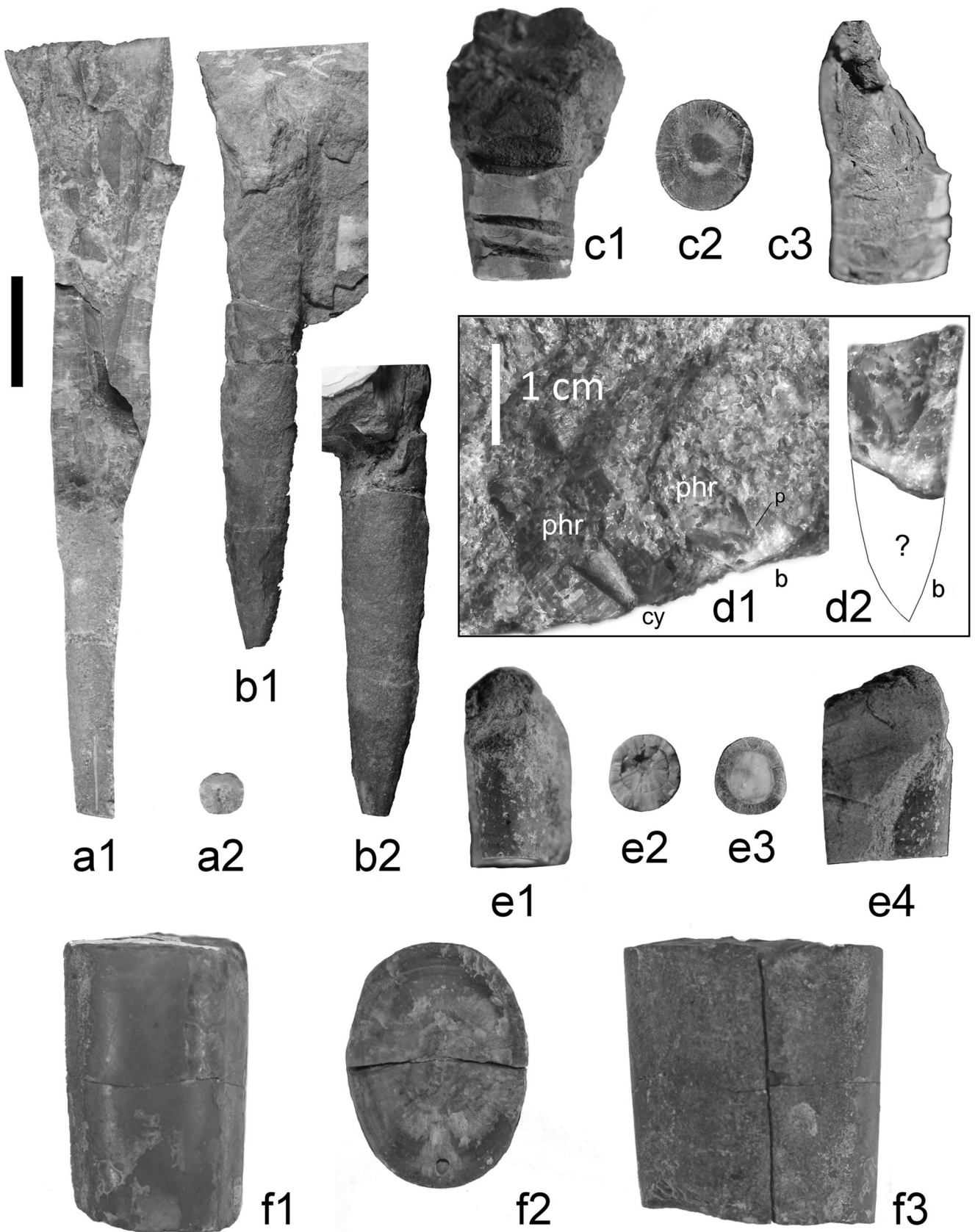
**Occurrence:** *M. elliptica* ranges from the *Laeviuscula*/*Propinquans* zones (lower Bajocian) to *Parkinsoni* Zone (uppermost Bajocian). France, Germany (also Saxony in this study), Great Britain, Luxembourg (Weis and Mariotti 2008), Switzerland, Poland (Pugaczewska 1961), ?Italy (Mariotti et al. 2007), upper Bajocian of the Northern Caucasus (Dzyuba et al. 2021), Bajocian of Donets Basin and Crimea (Paryshev and Nikitin 1981).

Family Cylindroteuthididae Stolley, 1919

Subfamily Cylindroteuthidinae Stolley, 1919

Genus *Cylindroteuthis* Bayle, 1878

**Fig. 6** Belemnites of the families Cylindroteuthididae and Megateuthididae. **a** *Cylindroteuthis* cf. *C. puzosiana* (d'Orbigny, 1842); N 99/1 (1 – ventral view, 2 – cross-section); locality Peškova stráň (Kyjov). **b** *Megateuthis suevica* (Klein, 1773); N 207/1 (1 – ventral view, 2 – lateral view); locality Štemberk (Brtníky). **c** *Megateuthis suevica* (Klein, 1773); CHMHZ-JG-1/1 (1 – ventral view, 2 – cross-section, 3 – lateral view); locality Hohnstein. **d1** (cy – N 99/2 *Cylindroteuthis* cf. *C. puzosiana* (d'Orbigny, 1842); b – N 99/3 Belemnitina indet., phr – phragmocone, p – protoconch); **d2** detail of N 99/3 Belemnitina indet. with possible shape of rostrum; locality Peškova stráň (Kyjov). **e** Belemnitida *incertae sedis*; CHMHZ-JG-10/1 (1 – ventral view, 2 – cross-section of rostrum solidum, 3 – cross-section in alveolar part, 4 – lateral view); locality Peškova stráň (Kyjov). **f** *Megateuthis* cf. *M. elliptica* (Miller, 1826); MMG-SaJ 10 (1 – ventral view, 2 – cross-section, 3 – lateral view); locality Hohnstein. The scale bar equals 2 cm, with exception of figs **d1**, **d2** (the scale bar = 1 cm).



**Type species:** *Belemnites puzosianus* d'Orbigny, 1842 (p. 117–118, pl. 16) by monotypy.

*Cylindroteuthis* cf. *C. puzosiana* (d'Orbigny, 1842)  
(Fig. 6a, d1(cy))

**Material and localities:** Rock sample (No. N 99) including one fragment (No. N 99/2) and 1 nearly complete rostrum (No. N 99/1; apicalmost part missing); Peškova stráň.

**Description:** Large-sized cylindrical rostrum with a deep alveolus, occupying up to 1/2 of the length of the preserved rostrum. The ventral apical or medioventral groove is distinct. The ventral side is slightly wider, rounded and more convex than the dorsum. The apical part is relatively short, with a circular cross-section. The apical line is eccentric and inclined to the ventral side. The rostrum, except for the apex, is compressed. During ontogeny, flattening becomes more pronounced.

**Remarks:** Possible occurrence of cylindroteuthidid belemnite should be also supported by occurrence of aulacostephanid (Boreal and sub-Boreal) ammonites. The appearance of typical lower Kimmeridgian Boreal and Sub-Boreal assemblages in northern Bohemia, represented by *Prorasenia* Schindewolf, 1925, *Rasenioides* Schindewolf, 1925 or *Eurasenia* Geyer, 1961, marks the Oxfordian/Kimmeridgian boundary (Hrbek 2014). The family Cylindroteuthididae is widespread in the Boreal Realm (e.g. Sachs and Nal'njaeva 1964; Doyle 1987; Dzyuba 2011). All cylindroteuthidids are relatively easily determinable from other related taxa within the family because of its typical ventral apical groove. Weakly eccentric apical line is typical for most species within the genera *Cylindroteuthis* and *Arctoteuthis* Sachs and Nal'njaeva, 1964. This sample belongs possibly to the genus *Cylindroteuthis*, which is morphologically distinguishable from the genus *Arctoteuthis*. The genus *Arctoteuthis* differs from the genus *Cylindroteuthis* by more flattened venter and uncompressed (circular to depressed) cross-section. The relative elongation of genera *Arctoteuthis* and *Cylindroteuthis* varies within close limits. The affinity of the sample for the species *C. puzosiana* is the largest due to the expected age of the rocks and unclear visibility of morphological parameters of the rostrum.

**Occurrence:** *Cylindroteuthis puzosiana* ranges Callovian–Kimmeridgian; Boreal belemnite – Russia, France, England, Ukraine (Mural 2011), Czech Republic (this study).

Belemnitina indet.  
(Fig. 6d1(b), d2)

**Material and localities:** A single incomplete rostrum (No. N 99/3 sample); Peškova stráň.

**Description:** A 20 mm long fragment possessing a phragmocone/alveolar part with an eccentric apical line in

longitudinal dorsoventral section. The alveolus is characteristic of one convex wall. The protoconch is well visible. The cross-section is compressed, circular to ovate.

**Remarks:** This rostrum is preserved within the N 99 sample (a piece of carbonate rock). Based on presence of *Cylindroteuthis* species in the same sample, we conclude a Late Jurassic age. Only one specimen with this type of alveolus was found in the studied material, however, the alveolar angle fits well with cylindroteuthidids. Nevertheless, we attribute this alveolus to a megateuthidid [possibly also genera *Arcobelus* Sachs and Nal'njaeva, 1967 and *Brevibelus* Doyle, 1992, however, both are of the Early (Toarcian, Aalenian), respectively the Middle Jurassic age (until Bajocian/Bathonian)]. Unfortunately, more detailed taxonomical classification is not possible due to the incomplete preservation of this studied fragmentary individual.

Belemnitida incertae sedis  
(Fig. 6 e)

**Material and localities:** A single incomplete rostrum [No. CHMHZ-JG-10/(1–4)]; Peškova stráň.

**Description:** Small-sized, compressed rostrum (length of about 50 mm) without an apical part. The apical line is eccentric. No lateral, apical or alveolar fissures are present. The alveolus is relatively short, and the cross-section of the rostrum is subpyriform to subquadratic. In the alveolar part, the pyriform shape is more pronounced.

**Remarks:** The pyriform and subpyriform shape of the rostrum is characteristic for the Cylindroteuthididae, Megateuthididae and Hastitidae Naef, 1922 families. However, the overall shape may correspond to the genus *Eocylindroteuthis* Riegraf, 1980 (family Megateuthididae; e.g. *sensu* Dzyuba et al. 2015), which is known from the lower Bajocian, or to the genus *Brevibelus*, ranging from the upper Toarcian to the upper Bajocian (Schlegelmilch 1998). This assumption is supported by the absence of grooves and by the characteristic cross-section of the rostrum.

Belemnite rostra geochemistry

Only limited material could be studied because most of the belemnite rostra belong to unique institutional collections. Analyses of cathodoluminescence and elemental components (Tab. 1) proved extensive diagenetic overprint and/or unsuitability of almost all samples for further analyses. Therefore, only one sample (*Hibolithes hastatus*; CHMHZ-JG-13b) is included in final interpretation. The  $\delta^{13}\text{C}$  and  $\delta^{18}\text{O}$  isotope values show consistency for the Middle and Upper Jurassic interval, where lower  $\delta^{18}\text{O}$  values fit well with the material from a similar environment (sub-Mediterranean) and the period around the Middle and Upper Jurassic boundary (e.g. Wierzbowski 2004; Wierzbowski et al. 2009). The  $^{87}\text{Sr}/^{86}\text{Sr}$

**Table 1** Geochemical analyses of belemnite rostra. Sample CHMHZ-JG-10/4 – locality Peškova stráň (Kyjov); CHMHZ-JG-1/4 – locality Hohnstein; CHMHZ-JG-13a, CHMHZ-JG-13b and CHMHZ-JG-13c – locality Šternberk (Brtníky); orange line: utilisable sample

Sample No.	Species	$\delta^{13}\text{C}$	$\delta^{18}\text{O}$	$^{87}\text{Sr}/^{86}\text{Sr}$	Ca (ppm)	Fe (ppm)	Mg (ppm)	Mn (ppm)	Rb (ppm)	Sr (ppm)
CHMHZ-JG-10/4	<i>B. incertae sedis</i>	1.70	-1.97	0.707280	328000	540	2710	40	–	1380
CHMHZ-JG-1/4	<i>M. suevica</i>	1.83	-1.84	0.707229	422000	1380	3200	160	–	1670
CHMHZ-JG-13a	<i>H. hastatus</i>	1.47	-3.71	0.707255	164000	1740	1100	80	10	190
CHMHZ-JG-13b	<i>H. hastatus</i>	1.93	-0.48	0.706886	341000	300	3110	30	–	1380
CHMHZ-JG-13c	<i>H. hastatus</i>	0.44	-0.77	0.706868	207000	530	1840	30	–	650

value of 0.706886 corresponds to the Callovian–lower Kimmeridgian data of the global  $^{87}\text{Sr}/^{86}\text{Sr}$  curve. This period is characterised by a rather uniform signal with balanced stagnation (Jenkyns et al. 2002).

Often, complete recrystallisation of the primary calcite of the rostra is present. Mostly, diagenetic processes significantly affected belemnite rostra and isotopic signals; therefore, the resulting values do not correspond with the original data. The amounts of Fe and Mn are higher than are generally considered to be applicable for relevant results of strontium analyses. Commonly, the amount of Mn should be <100 ppm, preferably <40 ppm (Vaňková et al. 2019) or <50 ppm (Jones et al. 1994), and ideally, the amount of Fe should not exceed 150 ppm (Wierzbowski 2004; McArthur et al. 2007). The amount of iron plays a much larger role in the analysed material and final evaluation than the amount of manganese (Jones et al. 1994). In addition, the concentration of Sr in the samples should be higher than 1000 ppm. Acceptable concentrations of the elements and isotope ratios vary between the authors and studied material (e.g. Jenkyns 1987; Jones 1994; Rosales et al. 2001, 2004; Jenkyns et al. 2002; McArthur et al. 2007). The Rb analysis was used to confirm the applicability of the samples for the strontium analyses. With a larger amount of rubidium, the final results are questionable. Moreover,  $^{87}\text{Rb}$  decays to  $^{87}\text{Sr}$  and higher concentrations of Rb isotopes can greatly affect the analysed amount of  $^{87}\text{Sr}$ .

Diagenetic overprint is relatively common in the studied area and characteristic also for other fossils and rocks. Isotopic data from most of the Jurassic strata in the northern Bohemian Massif and in Saxony (Hohnstein) are not relevant due to significant tectonic activity of Lausitian Fault during the Tertiary. At that time, the fault re-activating led to the strong diagenesis and dolomitisation of older lithological units. Moreover, some of them were strongly tectonically affected, influenced by later contact metamorphism (basaltic intrusions) linked to dolomitisation (Doubice).

#### Calcareous nannoplankton

Although calcareous nannoplankton were recorded in every sample, the preservation in most of the samples was poor to

extremely poor, which often did not allow taxonomical determination. Analysis of the nannoliths under SEM showed dissolution of coccoliths in these cases and common strong overgrowth (Fig. 7bb–gg).

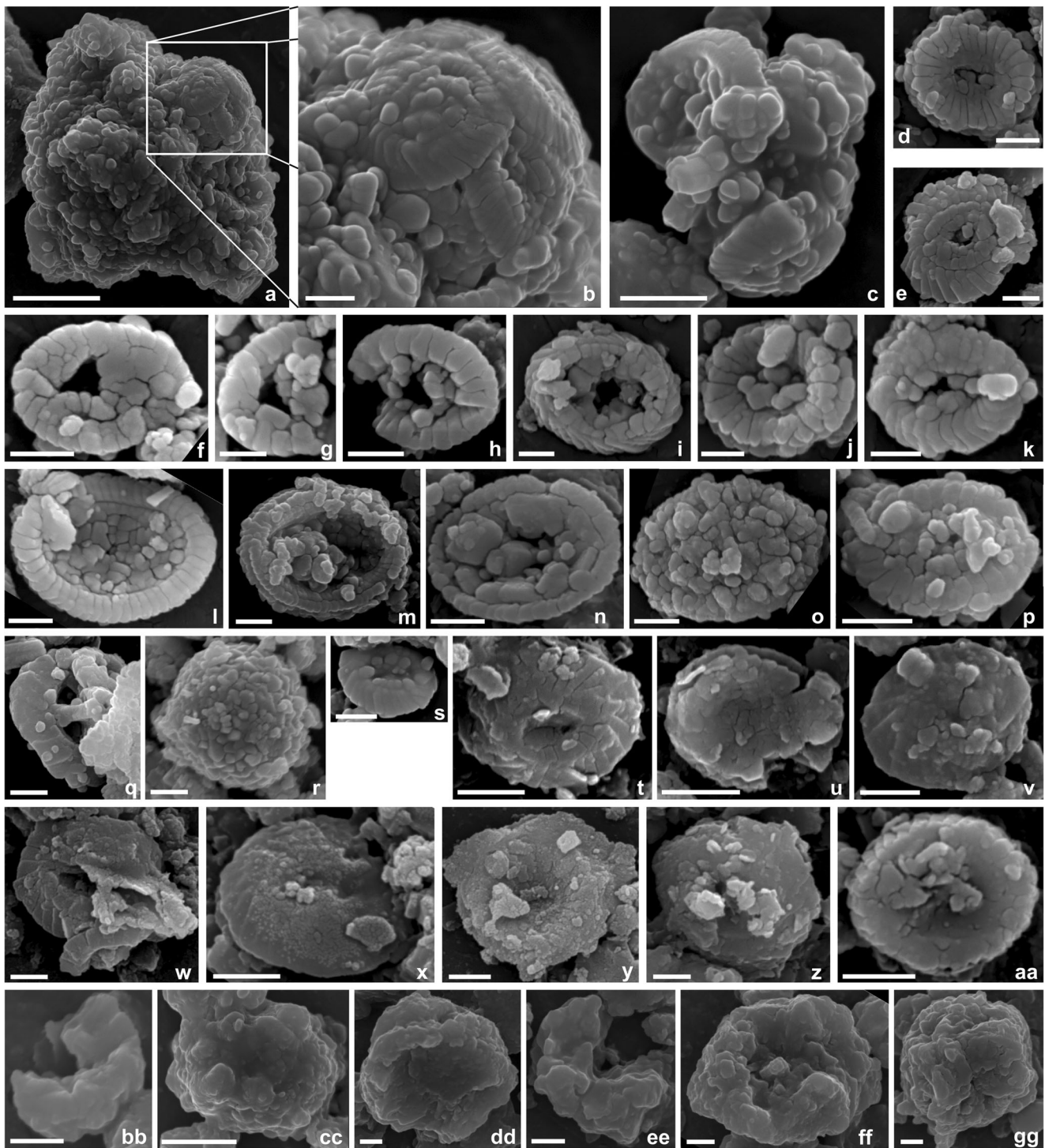
The abundance of nannoplakton varies between 0.1 and 1 nannolith/field of view in the optical microscope for the samples CHMHZ-JG-9/3, CHMHZ-JG-9/4, CHMHZ-JG-1/2, CHMHZ-JG-1/3, N 207/2, N 207/3, N 207/4, CHMHZ-MS-5292/2 and CHMHZ-MS-5292/3. A higher abundance of nannoliths, reaching 2–5 nannoliths/field of view, is recorded in the samples CHMHZ-JG-9/2, CHMHZ-JG-9/3 and CHMHZ-JG-9/4. However, the assemblages in these samples are composed only of the dissolution-resistant genus *Watznaueria* Reinhardt, 1964, and the preservation of coccoliths is poor (Fig. 7t–aa).

Well preserved, relatively abundant and diversified assemblages have been recorded in sample CHMHZ-JG-10/2. Besides *Watznaueria barnesiae*, also *Zeugrhabdotus noeliae* (common), *Ethmorhabdus gallicus* (rare), *Axopodorhabdus cylindratus* (very rare) and *Crepidolithus crassus* (very rare; Fig. 7a–q, s) were also observed. In the case of this sample, the abundance varies between 5 and 10 nannoliths/field of view in the microscope. For detailed calcareous nannoplankton data from this area see also Holcová and Holcová (2016).

#### Palaeoenvironmental and stratigraphical evaluations

All the discovered calcareous nannoplankton taxa are of a broad stratigraphical range. Representatives of the genus *Watznaueria* appeared within the Bajocian and survived to the end of the Cretaceous. Only sample CHMHZ-JG-13 (*H. hastatus*) can be correlated to the interval from the base of the Oxfordian (FO of *Zeugrhabdotus noeliae*; Young et al. 2021) to the middle Tithonian (LOs of *Axopodorhabdus cylindratus*, *Ethmorhabdus gallicus* and *Crepidolithus crassus*; Young et al. 2021). However, stratigraphical correlation based on belemnites is more accurate here.

Unfortunately, the calcareous nannoplankton species *Helenea chiesta* Worsley, 1971, which appeared first at the base of the NJT16a subzone (middle Tithonian; Young et al. 2021) has not been found in the new sample set. However, this



**Fig. 7** Calcareous nannoplankton (SEM view). **a–e, j–k** *Watznaueria barnesiae* (Black in Black and Barnes, 1959), Perch-Nielsen, 1968; CHMHZ-JG-10/2, a–b coccosphaera in (?) faecal pellet; locality Peškova stráň (Kyjov). **f–i** *Zeughrabdoius noeliae* Rood et al., 1971; CHMHZ-JG-10/2; locality Peškova stráň (Kyjov). **l–p** *Ethmorhabdus gallicus* Noël, 1965; CHMHZ-JG-10/2; locality Peškova stráň (Kyjov). **q** *Axopodorhabdus cylindricus* (Noël, 1965) Wind and Wise in Wise and Wind, 1977; CHMHZ-JG-10/2; locality Peškova stráň (Kyjov). **r** Calcisphaera; CHMHZ-JG-10/2; locality Peškova stráň (Kyjov). **s** *Crepidolithus crassus* (Deflandre in Deflandre and Fert, 1954) Noël,

1965; CHMHZ-JG-10/2; locality Peškova stráň (Kyjov). **t–w, y–aa** *Watznaueria barnesiae* (Black in Black and Barnes, 1959) Perch-Nielsen, 1968; **t–w** CHMHZ-JG-9/3; locality Peškova stráň (Kyjov). **w–y** CHMHZ-JG-9/2, **z–aa** CHMHZ-JG-9/4; locality Peškova stráň (Kyjov). **t–aa** corroded and overgrown specimens; locality Peškova stráň (Kyjov). **x** *Watznaueria britannica* (Stradner, 1963) Reinhardt, 1964; CHMHZ-JG-9/2; locality Peškova stráň (Kyjov). **bb–gg** strongly corroded and overgrown undeterminable coccoliths; CHMHZ-JG-1/2, CHMHZ-JG-1/3; locality Šternberk. The scale bar equals 2 µm, with exception of figs **a** and **c** (scale bars = 10 µm).



species was recorded in the studied area earlier and it extending the stratigraphical range of the sedimentation history in N Bohemia (Holcová and Holcová 2016).

Palaeoecological interpretation is restricted herein because dissolution and recrystallisation of coccoliths evoke taphonomical bias. The prevailing genus *Watznaueria* represents dissolution-resistant taxa (Hill 1975); therefore, their dominance could be increased secondary to the dissolution of other taxa from the original assemblages. This assumption could be supported by the low diversity of the assemblages in our samples. Typically, 15–30 species of calcareous nannoplankton occur in the assemblages during the Callovian–Oxfordian interval (Giraud 2009 and reference herein). In any case, watznaueriaceans represent an eurytopic life strategy with wide palaeoecological tolerance and could live in unstable environments (Lees et al. 2004, 2006; Colombié et al. 2014). Similar assemblages significantly dominated by watznauerias were also recorded in a previous study from this area (Holcová and Holcová 2016).

In the sample CHMHZ-JG-10/2, higher abundances of the genus *Zeugrhabdotus* Reinhardt, 1965 might be considered as indicating enhanced fertility conditions of the surface waters and colder surface waters (e.g. Roth and Krumbach 1986; Erba 1987, 1989). However, Eleson and Bralower (2005) doubted this interpretation and interpreted a rather oligotrophic habitat for this species. This discrepancy suggests an eurytopic life strategy for *Zeugrhabdotus*, one that is similar to watznauerias. Generally, the dominating taxa points to unstable conditions in the surface water. Very rare *Crepidolithus crassus* is interpreted as a deep dweller within the photic zone (Mattioli et al. 2008; Reggiani et al. 2010; Suchéras-Mar et al. 2010). Its rarity might indicate a rather shallow water environment (outer shelf).

It is worth noting that coccoliths were extraordinarily well preserved in components resembling faecal pellets (Fig. 7a–c). Because of the size of these pellets, among phytoplankton consumers, copepods could be considered the most likely producers of pellets (Kjørboe 2011). The monospecific composition of coccoliths in faecal pellets (*Watznaueria barnesiae*) supports the hypothesis that there might have been a seasonal blooms of this species. This assumption agrees with the well-known seasonality of herbivorous copepods—as potential producers of faecal pellets—which, in the recent oceans, feed during phytoplankton blooms and, during the rest of the year, store up energy from their seasonal food as oil droplets (Kjørboe 2011).

## Discussion

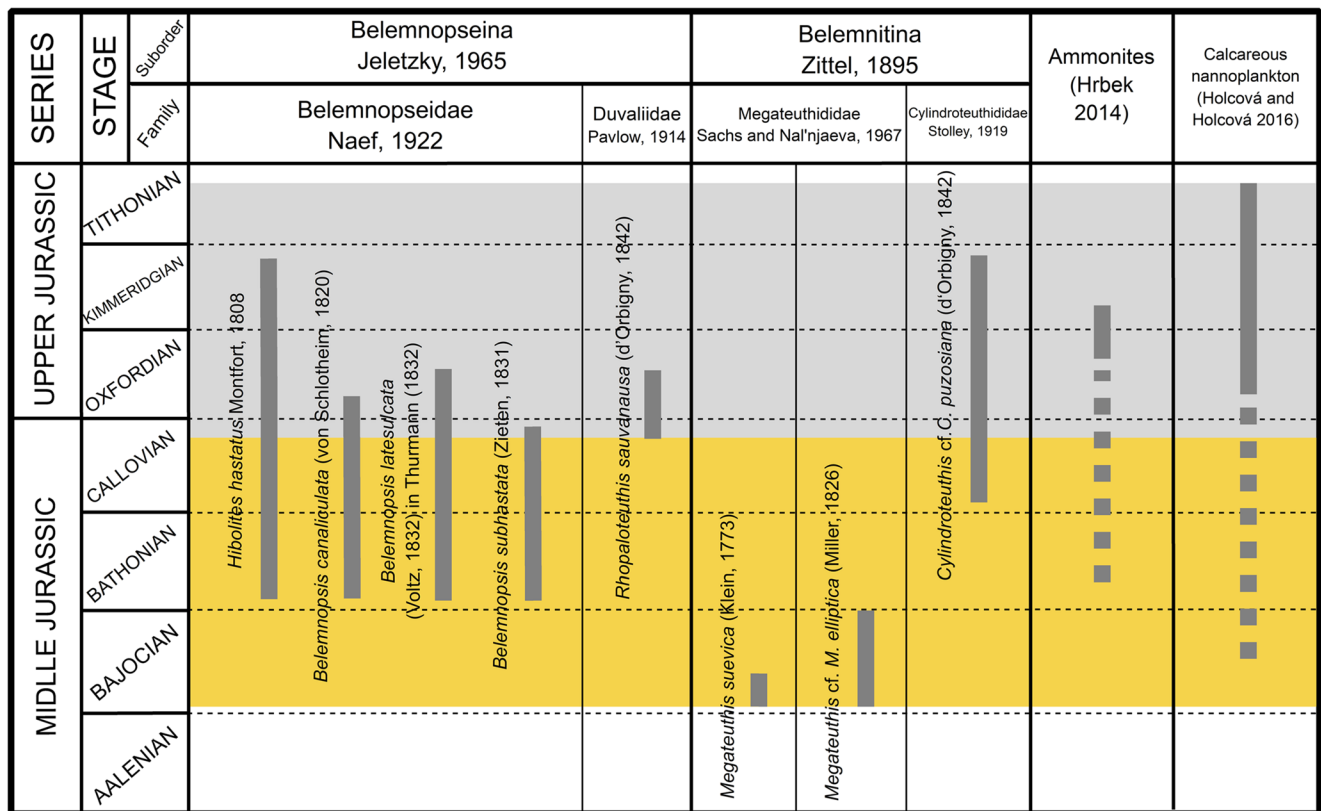
### Belemnites

Six species and two taxa identified as *Megateuthis* cf. *M. elliptica* and *Cylindroteuthis* cf. *C. puzosiana* (plus two

additional indeterminable taxa) belonging to four families (Belemnopseidae, Duvaliidae, Megateuthididae and Cylindroteuthididae) are described from Jurassic deposits of the North Bohemia and Saxony. They mostly belong to cosmopolitan and/or widespread taxa with a well-known morphology. Stratigraphically, the most significant taxa are represented by megateuthids—*M. suevica* and *M. cf. M. elliptica*, which characterise the Lower and possibly upper Bajocian (Fig. 8). Based on these records, we assume the beginning of sedimentation in the early Bajocian (*Propinquans* to *Humphriesianum* zones). Most of the studied belemnite faunas, however, are represented by the genera *Hibolithes* and *Belemnopsis*, which are typical for the late Middle Jurassic period. The genera *Rhopaloteuthis* and *Cylindroteuthis*, which are represented only by a few individuals, could potentially indicate a stratigraphically younger time (Fig. 8).

### Palaeobiogeographical assessment

Palaeobiogeographically, most of the belemnite faunas can be linked to the Tethyan Realm (Fig. 1). This is clearly visible in the species composition here with the taxa of the genus *Belemnopsis*. On the other hand, typical Boreal elements—for example *Cylindroteuthis* cf. *C. puzosiana* has also been recorded. During the Jurassic, several belemnite migrations took place within Europe because of changes in the environmental conditions, such as alternation of warmer and colder periods and sea-level changes (e.g. Dera et al. 2011, 2016) (Fig. 1). Because belemnites were stenothermic organisms, during these temperature fluctuations, they often migrated to refuges—that is, to the Arctic region during warmer periods and to the Tethyan/Mediterranean Realm during cooler times (Dera et al. 2016). In the Oxfordian age a considerable cooling event with significant changes in species composition is assumed (Cecca et al. 2005). During this period, species of the genus *Belemnopsis* stopped dominating, and the species *Cylindroteuthis puzosiana* occurred in northern Bohemia (Fig. 1). *C. puzosiana* is an exotic Boreal species and his occurrence clearly demonstrates the Boreal influence in the studied area, which was located at the border of the Boreal and Tethyan palaeobiogeographical provinces (Fig. 6). This assumption is also discussed by Hrbek (2014, see below), who revised and described sub-Boreal ammonites from this area. The majority of fauna (both benthic and nektonic) in the studied rocks, however, indicates conditions typical of the Peri-Tethyan shelf. Interestingly, this phenomenon in Central Europe occurred repeatedly much later, during the Upper Cretaceous, when the Tethyan faunal influence/dominance (Košťák et al. 2020) was interrupted by short-termed Boreal immigrations. Short-termed influxes of Boreal faunas, including belemnites, repeatedly occurred at least three times in the Cenomanian through Coniacian (Košťák et al. 2004), when



**Fig. 8** Total stratigraphical ranges of belemnite taxa (recorded from the northern Bohemian Massif) according to published literature [modified after Pugaczewska (1961), Gustomesov (1964), Mariotti (2002), Dzyuba (2005), Weis and Mariotti (2008) and Mural (2011)] in relation to ammonite (Hrbek 2014) and calcareous nannofossil data (Holcová and

Holcová 2016; this study). Grey and orange background: extended timespan of sedimentation (this study) based on summarised biostratigraphic data; orange background: prolonged sedimentary history of studied rocks (this study).

the Peri-Tethyan shelves with typical warm-water fauna prevailed in Central Europe. According to our new data presented herein, this area played an important role in faunal exchanges between the Tethyan and Boreal realms already in the Jurassic; this evokes the possibility of the existence of a significantly older ‘Gateway to Tethys’ (*sensu* Wiese et al. 2004) over the Bohemian Massif area than has previously been suggested (Table 1).

The considerable influence of the sub-Boreal Realm and sub-Tethyan Realm has been recognised based on Oxfordian and Kimmeridgian ammonites (Hrbek 2014). Unfortunately, no direct evidence of the connection of this area with the Tethys through a biotic communication channel *via* the Bohemian Massif has yet been proven. However, some indirect evidence based on analyses of calcareous nannoplankton (Holcová and Holcová 2016) and ammonite fauna (Hrbek 2014) may support this hypothesis. In the past, another possible communication channel connecting this area with the Polish Jurassic basins has also been suggested (e.g. Bruder 1886; Pienkowski et al. 2008).

According to the lithology of the strata, it is probable that the area was located in the open shelf sea and/or formed a bay with the occasional input of clastic material from the source

area (e.g. Hykš and Kumpan 2019). The lithological diversity of limestones and other Jurassic rocks in this area is quite considerable and further research is needed.

## Conclusion

We provide a novel and unusual combination using belemnites and calcareous nannofossil to obtain new data acquisition. Based on this approach, we were able to distinguish the geological history and stratigraphy of sedimentary relics in tectonically complicated areas (around the Lausitian Fault).

- Both groups show high potential for preservation in highly tectonised and partly dolomitised strata. Moreover, belemnites may provide primary geochemical data ( $^{13}\text{C}/^{12}\text{C}$ ,  $^{18}\text{O}/^{16}\text{O}$ ,  $^{87}\text{Sr}/^{86}\text{Sr}$ ) from this Jurassic strata.
- Based on belemnite and calcareous nannofossil records, the Jurassic sedimentary strata in the northern Bohemian Massif range from the Bajocian to Tithonian ages. The belemnite fauna ranges from the lower Bajocian (*Propinquans* to *Humphriesianum* zones) through the ?Kimmeridgian, with the most significant group being

the Middle Jurassic belemnite association (especially the genus *Belemnopsis*). We confirmed the stratigraphic distribution by calcareous nannoplankton, including in the Tithonian age.

- Megateuthidid belemnites (*Megateuthis suevica* and *Megateuthis* cf. *M. elliptica*) indicate the earliest known faunal components within the Central European Jurassic (Bohemian Massif).
- The presence of *M. suevica* in carbonate rocks clearly indicate the beginning of carbonate sedimentation in the early Middle Jurassic, not in the Late Jurassic as assumed earlier.
- Macro- and microfaunal data point to possible continuous sedimentation with frequent gaps (linked probably to eustatic cycles). Therefore, the historical lithostratigraphic regional division (Brtníky and Doubice formations based on a similar lithological character) is most likely not relevant.
- Calcareous nannoplankton assemblages may indicate changes in fertility conditions in surface waters during the Jurassic in Central Europe.
- The taxon *Cylindroteuthis* cf. *C. puzosiana* represents Boreal element and have proven the biotic communication of the studied area with colder regions during the Upper Jurassic.
- Scarce, yet, a very important record of belemnites (completed by calcareous nanofossils) document Jurassic sedimentary history in an important part of the Central Europe. In the light of these faunas, we assume that the sedimentary area was significantly larger in this region. This Jurassic basin preceded by dozens of million years of Late Cretaceous transgression and subsequent Cretaceous marine sedimentation.

**Acknowledgements** We would like to thank Dr. Jakub Trubač, Dr. Lenka Vondrovicová and Dr. Aneta Kuchařová (Charles University, Prague) for help with geochemical analyses, Dr. Petr Ježdík (Czech Technical University) for micro-CT investigation and Dr. Zuzana Vařilová (Municipal Museum of Ústí nad Labem), Dr. Jan Sklenář (National Museum, Prague), Dr. Olaf Tietz (Senckenberg Research Institute, Görlitz) and Dr. Birgit Gaitzsch (Technische Universität, Freiberg) for providing belemnite material and informations about localities. Aleš Novák and Martin Souček are greatly acknowledged for help in the fieldwork. Last but not least, we would warmly thank revisors Dr. Oksana S. Dzyuba (Trofimuk Institute of Petroleum Geology and Geophysics, Siberian Branch of the Russian Academy of Sciences) and Dr. Markus Wilmsen (Senckenberg Naturhistorische Sammlungen Dresden) for constructive revisions of our manuscript. We would kindly thank Peter Königshof and Sinje Weber for their thorough editorial work.

**CRedit authorship** Conceptualisation: Jan Geist; Methodology: Jan Geist, Katarína Holcová, Martin Košťák, Lucie Vaňková; Formal analysis and investigation: Jan Geist, Katarína Holcová, Lucie Vaňková, Martin Košťák; Writing – original draft preparation: Jan Geist, Katarína Holcová, Martin Košťák, Lucie Vaňková; Writing – review and editing: Jan Geist, Lucie Vaňková; Visualization: Jan Geist, Katarína Holcová, Martin Mazuch; Supervision: Martin Košťák, Lucie Vaňková.

**Data Availability Statements** All data generated or analysed during this study are included in this published article (and its supplementary information files).

**Funding** The research was financially supported by the Czech Science Foundation (GAČR project No. 20-10035S), Charles University institutional funding provided by Center for Geosphere Dynamics (UNCE/SCI/006), Charles University student project (GAUK No. 20121), START project (No. START/SCI/108) and PROGRES (Q45). The study fits in the concept of the research plan of the Institute of Geology of the Czech Academy of Science (No. RVO 67985831).

## Declarations

**Conflict of interest** The authors declare that they have no conflict of interest.

## References

- Abel, O. (1916) *Paläobiologie der Cephalopoden aus der Gruppe der Dibranchiaten*. Jena: Verlag Gustav Fischer.
- Alth, A. (1874) *Rzecz o belemnitach krakowskich (Abhandlung von den Krakauer Belemniten)*. Kraków: Sprawozdania Komisji Fizjograficznej Akademii Umiejętności w Krakowie.
- Arkadiev, V., & Dzyuba, O. S. (2021) The find of belemnite of the genus *Megateuthis* in the Bodrak. *Geology of Crimea- Scientific Notes of the Department of Sedimentary Geology*, (3), 52–58. [in Russian]
- Averianov, A., & Zverkov, N. (2020) New diplodocoid sauropod dinosaur material from the Middle Jurassic of European Russia. *Acta Palaeontologica Polonica*, 65(3), 499–509. <https://doi.org/10.4202/app.00724.2020>.
- Bather, F. A. (1888) Shell-growth in Cephalopoda (Siphonopoda). *The Annals and magazine of natural history; zoology, botany, and geology*, 6(1), 298–310.
- Bayle, C.-É. (1878) *Explication de la carte géologique de la France, publiée par ordre de M. le ministre des Travaux publics Tome quatrième, Atlas [Texte imprimé]: fossiles principaux des terrains: végétaux fossiles du terrain houiller*. Paris: Imprimerie nationale.
- Benecke, E. W. (1910) Über *Belemnites latesulcatus* und *Pronoella lotharingica*. *Centralblatt für Mineralogie, Geologie und Paläontologie*, 129–133.
- Black, M., & Barnes, B. (1959) The structure of coccoliths from the English Chalk. *Geological Magazine*, 96, 321–328.
- Blainville, H.-M. D. de (1827) *Mémoire sur les bélemnites, considérées zoologiquement et géologiquement*. Paris: F.-G. Levrault.
- Bruder, G. (1881) Zur Kenntniss der Juraablagerung von Sternberg bei Zeidler in Böhmen. *Zeitschrift für Naturwissenschaften*, 47–99.
- Bruder, G. (1882) Neue Beiträge zur Kenntniss der Juraablagerungen im nördlichen Böhmen. *Zeitschrift für Naturwissenschaften*, 450–489.
- Bruder, G. (1885) Die Fauna der Juraablagerung von Hohnstein in Sachsen. *Mittheilungen aus der Geologischen Institute der K. K. Deutschen Universität in Prag*, 6, 233–284.
- Bruder, G. (1886) Palaeontologische Beiträge zur Kenntniss der Juraablagerungen im nördlichen Böhmen II. *Zeitschrift für Naturwissenschaften*, 193–215.
- Bruder, G. (1887) Palaeontologische Beiträge zur Kenntniss der nordböhmischen Juragebilde. *Zeitschrift für Naturwissenschaften*, 39, 1–27.
- Bruder, G. (1888) Über die Juraablagerungen an der Granit- und Quadersandsteingrenze in Böhmen und Sachsen. *Lotos*, 35, 74–110.
- Bülow-Trummer, E. K. C. W. U. von (1920) *Fossilium Catalogus I: Animalia, II: Cephalopoda, Dibranchiata*. Edited by C. Diener. Berlin: W. Junk.

- Cecca, F. *et al.* (2005) Paleoclimatic control of biogeographic and sedimentary events in Tethyan and peri-Tethyan areas during the Oxfordian (Late Jurassic). *Palaeogeography, Palaeoclimatology, Palaeoecology*, 222(1–2), 10–32. <https://doi.org/10.1016/j.palaeo.2005.03.009>.
- Chrt, J. *et al.* (1957) *Závěrečná zpráva o vyhledávacím průzkumu lužická porucha*. Geofond Praha.
- Colombié, C. *et al.* (2014) Timing of sea level, tectonics and climate events during the uppermost Oxfordian (Planula Zone) on the Iberian Ramp (northeast Spain). *Palaeogeography, Palaeoclimatology, Palaeoecology*, 412, 17–31.
- Cuvier, G. L. C. F. D. (1797) *Tableau élémentaire de l'histoire naturelle des animaux*. Paris: François-Jean Baudouin.
- d'Orbigny, A. (1842) *Paléontologie française. Description zoologique et géologique de tous les animaux mollusques & rayonnés fossiles de France*. Paris: Chez Arthus Bertrand.
- Deflandre, G., & Fert, C. (1954) Observations sur les coccolithophoridés actuels et fossiles en microscopie ordinaire et électronique. *Annales de Paléontologie*, 40, 115–176.
- Dera, G. *et al.* (2011) Climatic ups and downs in a disturbed Jurassic world. *Geology*, 39(3), 215–218. <https://doi.org/10.1130/G31579.1>.
- Dera, G., Toumoulin, A., & de Baets, K. (2016) Diversity and morphological evolution of Jurassic belemnites from South Germany. *Palaeogeography, Palaeoclimatology, Palaeoecology*, 457, 80–97. <https://doi.org/10.1016/j.palaeo.2016.05.029>.
- Dercourt, J. *et al.* (2000) *Atlas Peri-Tethys. Palaeogeographical maps*. Paris: CCGM.
- Diggelen, J. van (1986) Belemniten. *Gea driemaandelijks tijdschrift van de Stichting Geologische Activiteiten voor belangstellenden in de geologie en mineralogie*, 19(1), 1–36.
- Douvillé, J. H. F. (1879) Note accompagnant la présentation de l'Atlas de t. iv de l'explication de la carte géologique de France de E. Bayle & R. Zeiller. *Bulletin de la Société géologique de France*, 7(3), 91–92.
- Doyle, P. (1987) Lower Jurassic-Lower Cretaceous belemnite biogeography and the development of the Mesozoic Boreal Realm. *Palaeogeography, Palaeoclimatology, Palaeoecology*, 61, 237–254.
- Doyle, P. (1992) The British Toarcian (Lower Jurassic) belemnites. Part 2. Monograph of the Palaeontographical Society. *Monograph of the Palaeontographical Society*, 145, 50–79.
- Dzyuba, O. S. (2005) Systematics and phylogeny of the boreal family Cylandroteuthidae: Problems solved and unsolved, *2nd International Symposium - Coleoid Cephalopods Through Time*. Prague, 64–67.
- Dzyuba, O. S. (2011) Subfamily classification within the Cylandroteuthidae. *Paleontology and stratigraphy*, 52(16–17), 103–108. [in Russian]
- Dzyuba, O. S. *et al.* (2015) *Rarobelus* nom. nov. from the Boreal Toarcian-Aalenian and its systematic position (Belemnitida, Belemnitina, Megateuthididae). *Neues Jahrbuch für Geologie und Paläontologie - Abhandlungen*, 275(3). <https://doi.org/10.1127/njgpa/2015/0465>.
- Dzyuba, O. S. *et al.* (2016) New data on Callovian (Middle Jurassic) belemnites and palynomorphs from the Northern Caucasus, southwest Russia. *Geologos*, 22(1), 49–59. <https://doi.org/10.1515/logos-2016-0004>.
- Dzyuba, O. S., Mitta, V. V., & Sherstyukov, M. P. (2021) New data on belemnites from the Uper Bajocian–Lower Bathonian of Karachay-Cherkessia (Northern Caucasus, Russia). In T. B. Leonova, & V. V. Mitta (Eds.) *Contributions to current cephalopod research: Morphology, Systematics, Evolution, Ecology and Biostratigraphy (25 – 27 October, 2021)*. Moscow, 35–38. [in Russian]
- Eleson, J. W., & Bralower, T. (2005) Evidence of changes in surface water temperature and productivity at the Cenomanian/Turonian boundary. *Micropaleontology*, 51(4), 319–332.
- Eliáš, M. (1981) Facies and paleogeography of the Jurassic of the Bohemian Massif. *Sborník geologických věd. Ústřední ústav geologický*, 75–140.
- Erba, E. (1987) Mid Cretaceous cyclic pelagic facies from the Umbrian-Marchean Basin: what do calcareous nannofossils suggest? *INA Newsletter*, 9, 53–53.
- Erba, E. (1989) Upper Jurassic to Lower Cretaceous Nannoconus distribution in some sections from Northern to Central Italy. *Memorie di Scienze Geologiche* 41, 255–261.
- Geyer, O. (1961) Monographie der Perisphinctidae des unteren Unter Kimmeridgium im süddeutschen Jura. *Paleontographica Abt. A*, 117, 1–157.
- Giraud, F. (2009) Calcareous nannofossil productivity and carbonate production across the Middle-Late Jurassic transition in the French Subalpine Basin. *Geobios*, 42(6), 699–714.
- Golonka, J. (2011) Chapter 6: Phanerozoic palaeoenvironment and palaeolithofacies maps of the Arctic region. *Geological Society Memoir*, 35, 79–129. <https://doi.org/10.1144/M35.6>.
- Gray, J. E. (1849) *Catalogue of the Mollusca in the collection of the British Museum I: Cephalopoda antepedia*. London: Printed by order of the Trustees.
- Gulyaev, D. B., Ippolitov, A. P., & Glinskikh, L. A. (2015) *Jurassic deposits of the Central Part of the mountain Dagestan*. Field guide to the VI all-Russian conference “Jurassic system of Russia: problems of stratigraphy and paleogeography”, 50–63. [in Russian]
- Gustomesov, V. A. (1964) Boreal Late Jurassic belemnites (Cylandroteuthinae) of the Russian platform. In N. P. Mikhailov, & V. A. Gustomesov (Eds.) *Boreal Late Jurassic Cephalopods*. [in Russian]
- Herrmann, O., & Beck, R. (1897) *Geologische Spezialkarte des Königreichs Sachsen, Section Hinterhermsdorf-Daubitz No. 86*. Leipzig: Giesecke & Devrient.
- Hill, M. E. I. (1975) Selective dissolution of Mid-Cretaceous (Cenomanian) calcareous nannofossils. *Micropaleontology*, 21(2), 227–235.
- Hoffmann, R., & Stevens, K. (2020) The palaeobiology of belemnites – foundation for the interpretation of rostrum geochemistry. *Biological Reviews*, 95(1), 94–123. <https://doi.org/10.1111/brv.12557>.
- Holcová, K., & Holcová, M. (2016) Calcareous nannoplankton in the Upper Jurassic marine deposits of the Bohemian Massif: New data concerning the Boreal–Tethyan communication corridor. *Geological Quarterly*, 60(3), 624–636. <https://doi.org/10.7306/gq.1282>.
- Holub, V., Skoček, V., & Tásler, R. (1978) Palaeogeography of the late palaeozoic in the Bohemian massif. *Palaeogeography, Palaeoclimatology, Palaeoecology*, 18, 313–332.
- Hrbek, J. (2014) The systematics and paleobiogeographic significance of sub-Boreal and Boreal ammonites (Aulacostephanidae and Cardioceratidae) from the Upper Jurassic of the Bohemian Massif. *Geologica Carpathica*, 65(5), 375–386. <https://doi.org/10.2478/geoca-2014-0026>.
- Hykš, P., & Kumpan, T. (2019) The Upper Jurassic fauna of the Hady hill at Brno, Czech Republic. *Acta Musei Moraviae Scientiae Geologicae*, 104(2), 179–216. [in Czech]
- Ippolitov, A. P. (2018) Marine Early Bajocian deposits of the Lower Volga Region (Volgograd Region) and their belemnite-based stratigraphy. *Stratigraphy and Geological Correlation*, 26(3), 298–332. <https://doi.org/10.1134/S0869593818030073>.
- Janssen, N. M. M. (2021) Mediterranean Neocomian belemnites, part 5: Valanginian temporal distribution and zonation (and some lithological remarks). *Carnets de Geologie*, 21(4), 67–125. <https://doi.org/10.2110/camets.2021.2104>.
- Jeletzky, J. A. (1946) Zur Kenntnis der Oberkretazischen Belemniten. *Geologiska Föreningens i Stockholm Förhandlingar*, 68, 87–105.
- Jeletzky, J. A. (1965) Late Upper Jurassic and early Lower Cretaceous fossil zones of the Canadian western Cordillera, British Columbia. *Geological Survey of Canada, Bulletin* 103, 70.

- Jenkyns, H. C. (1987) Relative sea-level change and carbon isotopes: data from the Upper Jurassic (Oxfordian) of central and Southern Europe. *Terra Nova*, 8(1), 75–85.
- Jenkyns, H. C., Jones, C. E., Gröcke, D. R., Hesselbo, S. P., & Parkinson, D. N. (2002) Chemostratigraphy of the Jurassic System: Applications, limitations and implications for palaeoceanography. *Journal of the Geological Society*, 159(4), 351–378. <https://doi.org/10.1144/0016-764901-130>.
- Jones, C. E. et al. (1994) Strontium isotopic variations in Jurassic and Cretaceous seawater. *Geochimica et Cosmochimica Acta*, 58(14), 3061–3074. [https://doi.org/10.1016/0016-7037\(94\)90179-1](https://doi.org/10.1016/0016-7037(94)90179-1).
- Kettle, S. (2016) Sedimentology of a Middle Jurassic base-of-slope environment, Cutri Formation, Mallorca. *Journal of Iberian Geology*, 42(1), 95–112. [https://doi.org/10.5209/rev\\_JIGE.2016.v42.n1.50710](https://doi.org/10.5209/rev_JIGE.2016.v42.n1.50710).
- Kjørboe, T. (2011) What makes pelagic copepods so successful? *Journal of Plankton Research*, 33(5), 677–685.
- Klein, J. T. (1773) *Descriptiones tubulorum marinorum: in quorum censum relati lapides caudae cancri, Gesneri, & his similes; belemnitae; eorumque alveoli*. Danzig: Knoch.
- Košťák, M. et al. (2004) Belemnites of the Bohemian Cretaceous Basin in a global context. *Acta Geologica Polonica*, 54(4), 511–533.
- Košťák, M., Kohout, O., Mazuch, M., Čech, S. (2020) An unusual occurrence of vascoeratid ammonites in the Bohemian Cretaceous Basin (Czech Republic) marks the lower Turonian boundary between the Boreal and Tethyan realms in central Europe. *Cretaceous Research*, 108, 104338.
- Lees, J. A. et al. (2004) Evidence for annual records of phytoplankton productivity in the Kimmeridge Clay Formation coccolith stone bands (Upper Jurassic Dorset, UK). *Marine Micropaleontology*, 52, 29–49.
- Lees, J. A., Bown, P. R., & Young, J. R. (2006) Photic zone palaeoenvironments of the Kimmeridge Clay Formation (Upper Jurassic, UK) suggested by calcareous nannoplankton palaeoecology; causes and consequence of marine organic carbon burial through time. *Palaeogeography, Palaeoclimatology, Palaeoecology*, 235, 110–134.
- Lenz, O. (1870) Ueber das Auftreten jurassischer Gebilde in Böhmen. *Zeitschrift für die gesammten Naturwissenschaften, Neue Folge*, 1(35), 41.
- Leonowicz, P. (2015) Storm-influenced deposition and cyclicity in a shallow-marine mudstone succession - Example from the middle Jurassic ore-bearing clays of the Polish Jura (southern Poland). *Geological Quarterly*, 59(2), 325–344. <https://doi.org/10.7306/gq.1221>.
- Lissajous, M. (1915) Quelques remarques sur les Bélemnites jurassiques. *Bulletin de la Société d'histoire naturelle de Mâcon*, (leden), 1–173.
- Lissajous, M. (1925) Répertoire alphabétique des bélemnites jurassiques, précédé d'un essai de classification: ouvrage posthume de. *Mémoire / Laboratoire de géologie*, 7, p. 173.
- Loriol, P. de (1900) Étude sur les mollusques et brachiopodes de l'Oxfordien inférieur ou zone à "Ammonites Renggeri" du Jura lédonien, par P. de Loriol, accompagnée d'une notice stratigraphique par M. Abel Girardot. *Mémoires de la Société paléontologique Suisse, XX VII (1900)*, 1–196.
- Mariotti, N. (2002) Upper Callovian - Middle Oxfordian belemnite assemblage from Monte Kumeta (Jurassic of western Sicily, Italy). *Bollettino della Società Paleontologica Italiana*, 41(1), 13–35.
- Mariotti, N. et al. (2013) Oxfordian belemnites and ammonites from Rostam Kola, Northern East Alborz, north Iran. *Boletín del Instituto de Fisiografía y Geología*, 83, 15–26.
- Mariotti, N., Santantonio, M., & Weis, R. (2007) Aalenian-Early Bajocian belemnite assemblage from peri-Mediterranean Tethyan sediments (Calabria, southern Italy). *Geologica Romana*, 40, 1–19.
- Mattioli, E. et al. (2008) Calcareous nannoplankton across Early Toarcian anoxic event: implications for palaeoceanography within the western Tethys. *Palaeoceanography*, 23, 1–17.
- Mayer, C. E. H. von (1863) Liste par ordre systématique des Bélemnites des terrains jurassiques. *Journal de Conchyliologie*, 11, 181–194.
- McArthur, J. M. et al. (2007) Testing palaeo-environmental proxies in Jurassic belemnites: Mg/Ca, Sr/Ca, Na/Ca,  $\delta^{18}\text{O}$  and  $\delta^{13}\text{C}$ . *Palaeogeography, Palaeoclimatology, Palaeoecology*, 252(3–4), 464–480. <https://doi.org/10.1016/j.palaeo.2007.05.006>.
- Miková, J., & Denková, P. (2007) Modified chromatographic separation scheme for Sr and Nd isotope analysis in geological silicate samples. *Journal of Geosciences*, 52(3–4), 221–226. <https://doi.org/10.3190/jgeosci.015>.
- Miller, J. S. (1826) Observations on belemnites, *Transactions of the Geological Society of London*, 2, 45–62.
- Mitchell, S. F. (2015) A reassessment of the validity and affinities of *Belemnites sulcatus* MILLER 1826, *Belemnopsis* EDWARDS in GRAY, 1849, and *Belemnopsis* BAYLE, 1878. *Carnets de Géologie*, 15, 31–39. <https://doi.org/10.4267/2042/56399>.
- Montfort, P. D. de (1808) *Conchyliologie systématique, et classification méthodique des coquilles: offrant leurs figures, leur arrangement générique, leurs descriptions caractéristiques, leurs noms, ainsi que leur synonymie en plusieurs langues: ouvrage destiné à faciliter*. Paris: Frédéric Schoell.
- Münster, G. L. F. W. G. zu (1830) *Über einige ausgezeichnete fossile Fischzähne aus dem Muschelkalk bei Bayreuth*. Bayreuth: F. C. Bimer.
- Mural, M. (2011) First finds upper Jurassic belemnites in Ukrainian Carpathians. *Paleontological collection*, 43, 72–76. <https://doi.org/10.1017/CBO9781107415324.004>. [in Ukrainian]
- Naef, A. (1922) *Die fossilen Tintenfische. Eine paläozoologische Monographie*. Jena: Gustav Fischer.
- Nier, A. O. (1938) The isotopic constitution of strontium, barium, bismuth, thallium and mercury. *Physical Review*, 5, 275–279.
- Noël, D. (1965) *Sur les Cocolithes du Jurassique Européen et d'Afrique du Nord. Essai de classification des coccolithes fossiles*. Paris: Centre national de la recherche scientifique.
- Opletal, M., & Adamová, M. (2001) *Geological mapping of the Lusatian Massif in the Šluknov area on a scale of 1:25 000. Zprávy o geologických výzkumech*. Praha. [in Czech]
- Oppel, A. (1857) *Die Juraformation Englands, Frankreichs und des südwestlichen Deutschlands. Nach ihren einzelnen Gliedern eingetheilt und verglichen*. Stuttgart: Ebner & Seubert.
- Paryshev, A. V., & Nikitin, I. I. (1981) *Cephalopods from the Jurassic of Ukraine. Paleontological guide*. Kiev: Naukova dumka.
- Pavlov, A. P. (1914) The Jurassic and Lower Cretaceous cephalopoda of Northern Siberia. *Zapiski Imperatorskoi akademii nauk*, 8(21), 1–68. [in Russian]
- Perch-Nielsen, K. (1968) Der Feinbau und die Klassifikation der Cocolithen aus dem Maastrichtien von Dänemark. *Det Kongelige Danske Videnskaberne Selskab Biologiske Skrifter*, 16(1), 1–96.
- Pienkowski, G. et al. (2008) Jurassic. In T. McCann (Ed.), *The Geology of Central Europe. Volume 2: Mesozoic and Cenozoic*. London: Geological Society, 823–922.
- Pugaczewska, H. (1961) Belemnoids from the Jurassic of Poland. *Palaeontologica Polonica*, 6(2), 105–236.
- Quenstedt, F. A. von (1849) Die Cephalopoden. *Petrefactenkunde Deutschlands* (pp. 1–569). Leipzig: L. F. Fues.
- Reggiani, L., Mattioli, E., Pittet, B., Duarte, L. V., Oliveira, L. C. Veiga de, Comas-Rengifo, M. J. (2010) Pliensbachian (Early Jurassic) calcareous nannofossils from the Peniche section (Lusitanian Basin, Portugal): A clue for palaeoenvironmental reconstructions. *Marine Micropaleontology*, 75, 1–16.
- Reinhardt, P. (1964) Einige Kalkflagellaten-Gattungen (Coccolithophoridae, Coccolithineen) aus dem Mesozoikum Deutschlands. *Monatsberichte der Deutschen Akademie der Wissenschaften zu Berlin*, 6, 749–759.

- Reinhardt, P. (1965) Neue Familien für fossile Kalkflagellaten (Coccolithophoriden, Coccolithineen). *Monatsberichte der Deutschen Akademie der Wissenschaften zu Berlin*, 7, 30–40.
- Riche, A. (1893) Étude stratigraphique sur le jurassique inférieur du Jura méridional. *Annales de l'Université de Lyon*, 1–396.
- Riegraf, W. (1980) Revision der Belemniten des schwäbischen Jura. Teil 7. *Palaeontographica, Abteilung A: Paläozoologie - Stratigraphie*, 169, 128–206.
- Riegraf, W. (1981) Revision der Belemniten des Schwäbischen Jura. Teil 8 (Schluß). *Palaeontographica Abteilung A Band A173 Lieferung 1-4*, 64–139.
- Riegraf, W. et al. (1998) Cephalopoda Dibranchiata Fossiles (Coleoidea). II. In F. Westphal (Ed.) *Fossilium Catalogus. I: Animalia* (pp. 1–512). Leiden: Backhuys Publishers.
- Riegraf, W. (2000) The belemnites described by Baron Ernst Friedrich von Schlotheim. *Paläontologische Zeitschrift*, 74(3), 281–303.
- Rood, A. P., Hay, W. W., & Barnard, T. (1971) Electron microscope studies of Oxford Clay coccoliths. *Eclogae Geologicae Helveticae*, 64, 245–272.
- Rosales, I., Quesada, S., & Robles, S. (2001) Primary and diagenetic isotopic signals in fossils and hemipelagic carbonates: The Lower Jurassic of northern Spain. *Sedimentology*, 48(5), 1149–1169. <https://doi.org/10.1046/j.1365-3091.2001.00412.x>.
- Rosales, I., Robles, S., & Quesada, S. (2004) Elemental and oxygen isotope composition of early Jurassic belemnites: salinity vs. temperature signals. *Journal of Sedimentary Research*, 74(3), 342–354. <https://doi.org/10.1306/112603740342>.
- Roth, P. H., & Krumbach, K. R. (1986) Middle Cretaceous calcareous nannofossil biogeography and preservation in the Atlantic and Indian oceans: Implications for paleoceanography. *Marine Micropaleontology*, 10, 235–266.
- Różycki, S. Z. (1953) *Górny dogger i dolny malm Jury Krakowsko-Częstochowskiej*. Wydawnictwa Geologiczne.
- Sachs, V. N., & Nal'njaeva, T. I. (1964) *Upper Jurassic and Lower Cretaceous belemnites of the northern USSR. The genera Cylindroteuthis and Lagonibelus* (pp.1–168). Moskau: Nauka. [in Russian]
- Sachs, V. N., & Nal'njaeva, T. I. (1967) On the systematics of Jurassic and Cretaceous belemnites. In the article of Sachs: Problems of paleontologic substantiation of detailed Mesozoic stratigraphy of Siberia and the Far East of USSR. *Materials for the 2nd International Colloquium on the Jurassic System*. Luxembourg, 6–27. [in Russian]
- Schindelwolf, O. H. (1925) Entwurf einer Systematik der Perisphincten. *Neues Jahrbuch für Geologie und Paläontologie, Beilageband B*, 52, 309–343.
- Schlegelmilch, R. (1998) *Die Belemniten des süddeutschen Jura: Ein Bestimmungsbuch für Geowissenschaftler und Fossiliensammler*. Heidelberg: Spektrum Akademischer Verlag.
- Schlotheim, E. F. von (1820) *Die Petrefactenkunde auf ihrem jetzigen Standpunkte durch die Beschreibung seiner Sammlung versteinerter und fossiler Überreste des Thier- und Pflanzenreichs der Vorwelt*. Gotha: Beckersche Buchhandlung.
- Simpson, M. (1855) *The fossils of the Yorkshire Lias; described from nature*. London and Whitby: Whittaker.
- Stolley, E. (1919) Die Systematik der Belemniten. *Jahresbericht des Niedersächsischen Geologischen Vereins*, 11, 1–59.
- Stradner, H. (1963) New contributions to Mesozoic stratigraphy by means of nannofossils. *Sixth World Petroleum Congress Proceedings 1*, 167–183.
- Suchéras-Mar, B. et al. (2010) Astronomically-paced coccolith size variations during the early Pliensbachian (Early Jurassic). *Palaeogeography, Palaeoclimatology, Palaeoecology*, 295, 281–292.
- Taheri, J., Fürsich, F. T. and Wilmsen, M. (2009) Stratigraphy depositional environments and geodynamic significance of the Upper Bajocian-Bathonian Kashafrudformation, NE Iran. *Geological Society Special Publication*, 312, 205–218. <https://doi.org/10.1144/SP312.10>.
- Thurmann, J. (1832) Essai sur les soulèvements jurassiques du Porrentruy. *Mémoires de la Société du muséum d'histoire naturelle de Strasbourg*, 1(27), p. 84.
- Valečka, J. (2019) Jurassic pebbles in the Cretaceous sandstones of the Bohemian Basin as a possible tool for reconstruction of the Late Jurassic and Late Cretaceous palaeogeography. *Volumina Jurassica*, (17), 17–38. <https://doi.org/10.7306/vj.17.2>.
- Vaňková, L. et al. (2019) Integrated stratigraphy and palaeoenvironment of the Berriasian peri-reefal limestones at Štramberk (Outer Western Carpathians, Czech Republic). *Palaeogeography, Palaeoclimatology, Palaeoecology*, 532(January). <https://doi.org/10.1016/j.palaeo.2019.109256>.
- Vaňková, L., Košťák, M., & Mazuch, M. (2021) Lower Cretaceous belemnites of Štramberk klippen (Czech Republic): Implications for geological history of the Outer Western Carpathians. *Cretaceous Research*, 126, 104905. <https://doi.org/10.1016/j.cretres.2021.104905>.
- Voltz, P. L. (1830) *Observations Sur Les Belemnites*. Paris: F. G. Levrault.
- Voltz, P. L. (1832) In the article of Jules Thurmann: Essai sur les soulèvements jurassiques du Porrentruy. *Mémoires de la Société du muséum d'histoire naturelle de Strasbourg*, 1(27), p. 84.
- Weis, R. (2006) Bélemnites (Cephalopoda, Coleoidea) du Bajocien de Rumelange (Luxembourg). *Bulletin de la Société des naturalistes Luxembourggeois*, 106(June), 151–165.
- Weis, R., & Mariotti, N. (2008) A belemnite fauna from the Aalenian-Bajocian boundary beds of the Grand Duchy of Luxembourg (NE Paris Basin). *Bollettino della Società Paleontologica Italiana*, 46(2–3), 149–174.
- Wetzel, W. (1911) Faunistische und stratigraphische Untersuchung der Parkinsoniensichten des Teutoburger Waldes bei Bielefeld. *Palaeontographica: Beiträge zur Naturgeschichte der Vorzeit*, LVIII, 1–458.
- Wierzbowski, H. (2004) Carbon and oxygen isotope composition of Oxfordian-Early Kimmeridgian belemnite rostra: Palaeoenvironmental implications for Late Jurassic seas. *Palaeogeography, Palaeoclimatology, Palaeoecology*, 203, 153–168. [https://doi.org/10.1016/S0031-0182\(03\)00673-4](https://doi.org/10.1016/S0031-0182(03)00673-4).
- Wierzbowski, H., Dembiczyk, K., & Praszkiar, T. (2009) Oxygen and carbon isotope composition of Callovian – Lower Oxfordian (Middle – Upper Jurassic) belemnite rostra from central Poland: A record of a Late Callovian global sea-level rise? *Palaeogeography, Palaeoclimatology, Palaeoecology*, 283(3–4), 182–194. <https://doi.org/10.1016/j.palaeo.2009.09.020>.
- Wierzbowski, H., & Joachimski, M. M. (2009) Stable isotopes, elemental distribution, and growth rings of belemnite rostra: Proxies for belemnite life habitat. *Palaios*, 24(6), 377–386. <https://doi.org/10.2110/palo.2008.p08-101r>.
- Wierzbowski, H., & Rogov, M. (2011) Reconstructing the palaeoenvironment of the Middle Russian Sea during the Middle-Late Jurassic transition using stable isotope ratios of cephalopod shells and variations in faunal assemblages. *Palaeogeography, Palaeoclimatology, Palaeoecology*, 299(1–2), 250–264. <https://doi.org/10.1016/j.palaeo.2010.11.006>.
- Wiese, F. et al. (2004) The Upper Turonian of the Bohemian Cretaceous Basin (Czech Republic) exemplified by the Úpohlavy working quarry: Integrated stratigraphy and palaeoceanography of a gateway to the Tethys. *Cretaceous Research*, 25(3), 329–352. <https://doi.org/10.1016/j.cretres.2004.01.003>.
- Wise, S. W., & Wind, F. H. (1977) Mesozoic and Cenozoic calcareous nannofossils recovered by DSDP Leg 36 drilling on the Falkland Plateau, south-west Atlantic sector of the Southern Ocean. *Initial Reports of the Deep Sea Drilling Project*, 36, 269–491.
- Worsley, T. R. (1971) Calcareous nannofossil zonation of Upper Jurassic and Lower Cretaceous sediments from the Western Atlantic. Edizioni Tecnoscienza (Ed.) *Proceedings of the Second Planktonic Conference Roma 1970*. Rome, 1301–1321.

- Young, J. R., Bown, P. R., & Lees, J. A. (2021) *Nannotax3 website. International Nannoplankton Association*. Accessed 13 Apr. 2021. Available at: <http://www.mikrotax.org/Nannotax3>.
- Zieten, K. H. F. D. von (1831) *Die Versteinerungen Württembergs oder naturgetreue Abbildungen der in den vollständigsten Sammlungen, namentlich der in dem Kabinet des Oberamts-Arzt Dr. Hartmann befindlichen Petrefacten, mit Angabe der Gebirgs-Formationen, in*

*welchen dieselben vorkommen* (pp. 1-102). Stuttgart: Verlag & Lithographie der Expedition des Werkes unserer Zeit.

Zittel, K. A. R. von (1895) *Grundzüge der Palaeontologie (Palaeozoologie)*. München, Berlin: R. Oldenbourg.

**Publisher's note** Springer Nature remains neutral with regard to jurisdictional claims in published maps and institutional affiliations.